

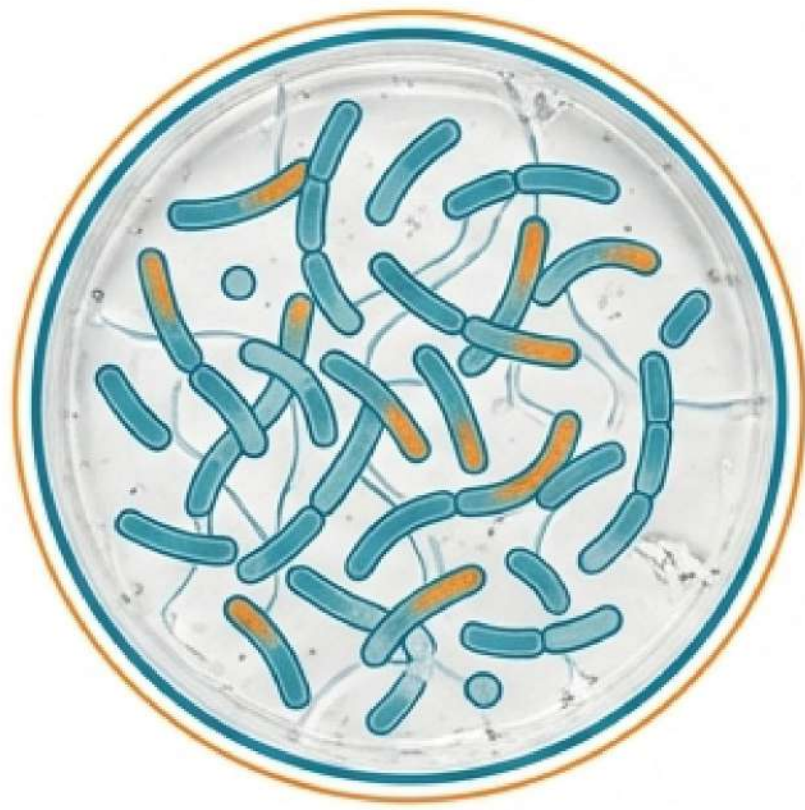
FUNGILEV

PROFESSIONAL SANITARY
CLEANER & TREATMENT

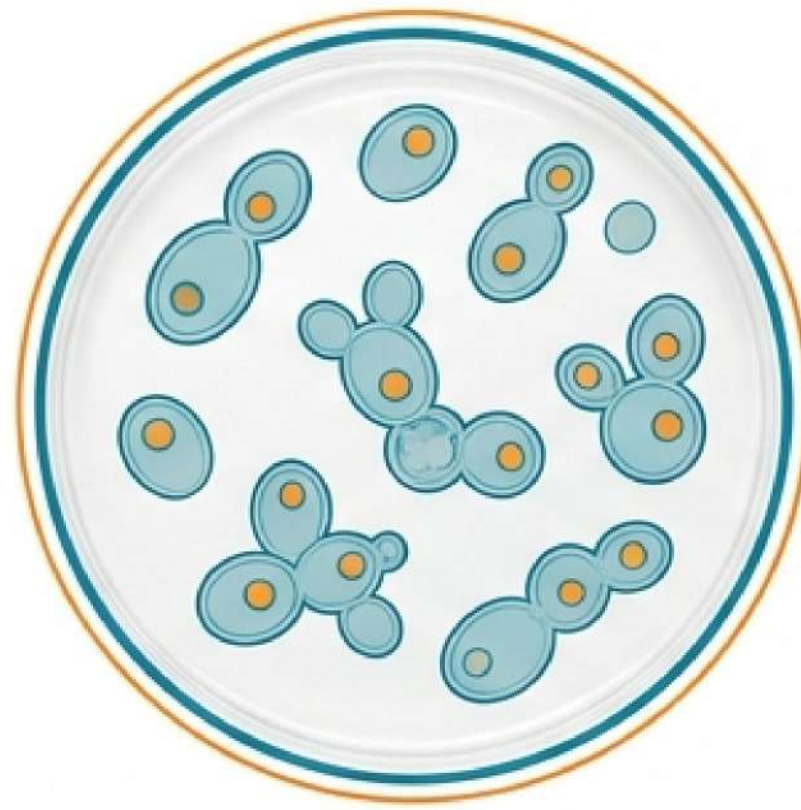


THE FUNCTION

Broad-spectrum biological defense system.



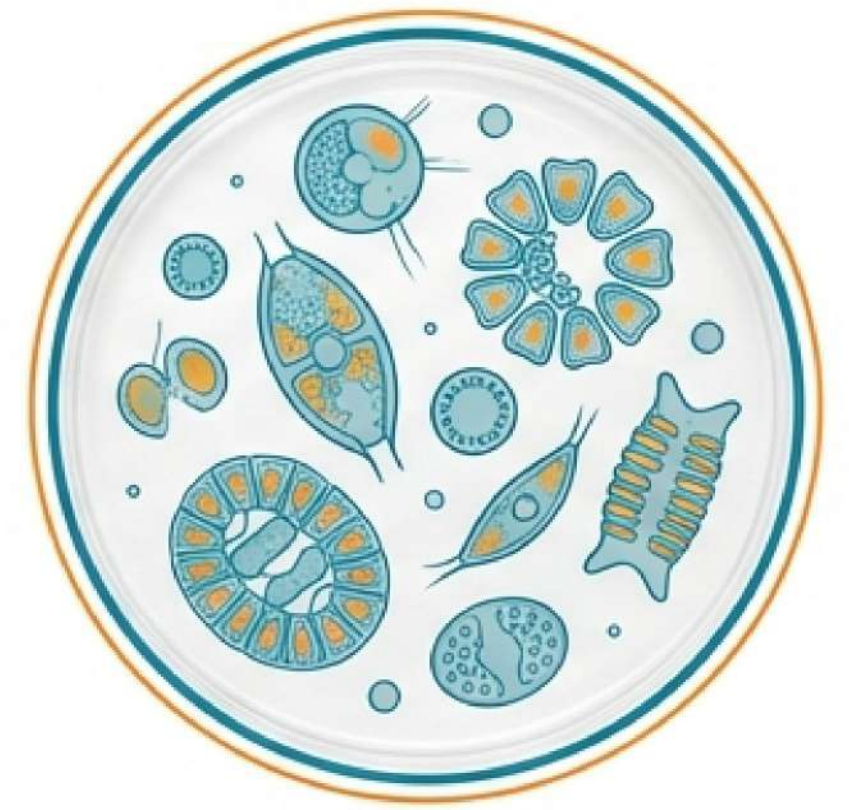
BACTERIA



YEASTS



MOLDS



ALGAE

NEUTRALIZED



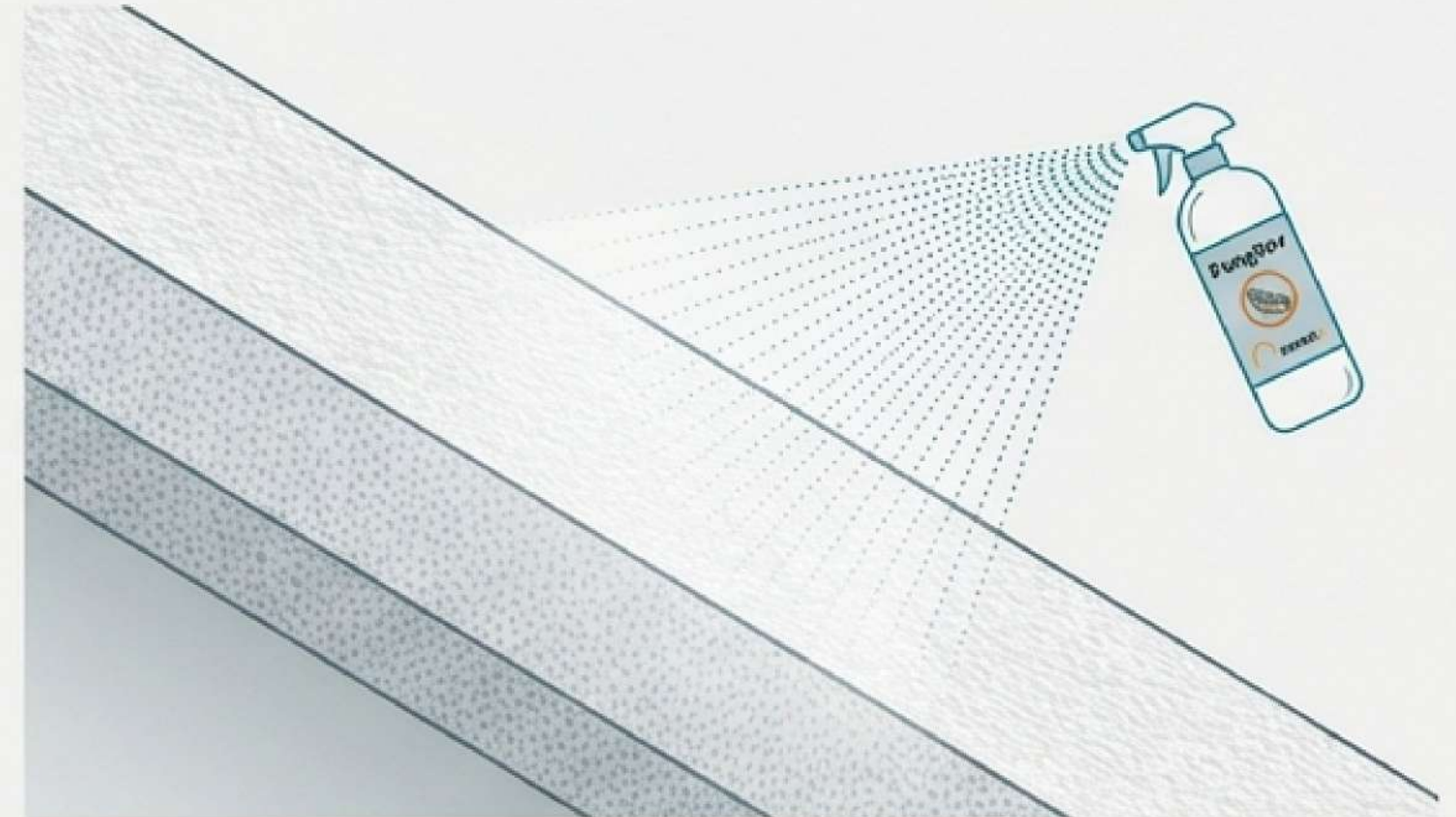
ACTION PROFILE: Curative Disinfection + Preventative Anchor Bridge

STEP 01: MECHANICAL CLEANING



Requirement: Remove physical dirt, grease, and loose particles using soapy water or bleach.

STEP 02: CHEMICAL TREATMENT



Requirement: Apply Fungilev only to a debris-free substrate to ensure direct contact.

CRITICAL: Do not apply disinfectant over physical dirt.

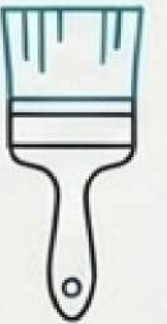
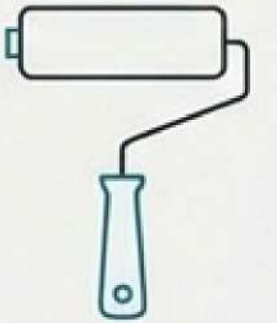
APPLICATION PROTOCOL

**THE GOLDEN RULE:
TWO CROSSD LAYERS**

Layer 1 (Horizontal)

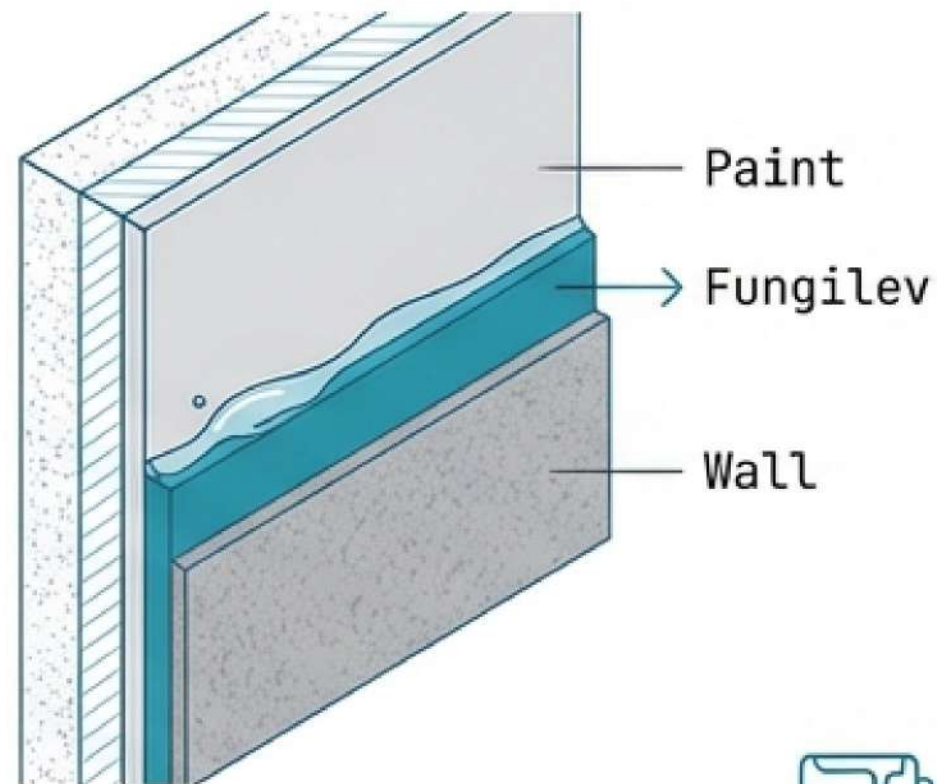
Layer 2 (Vertical)

YIELD: 6–8 m²/L
CONSUMPTION: ~0.15 L/m²



STRATEGIC USE CASES

COATING PRE-TREATMENT



ASBESTOS PROTOCOL



JetBrains Mono
Encapsulate fibers
before cork spraying.



SURFACE RESTORATION

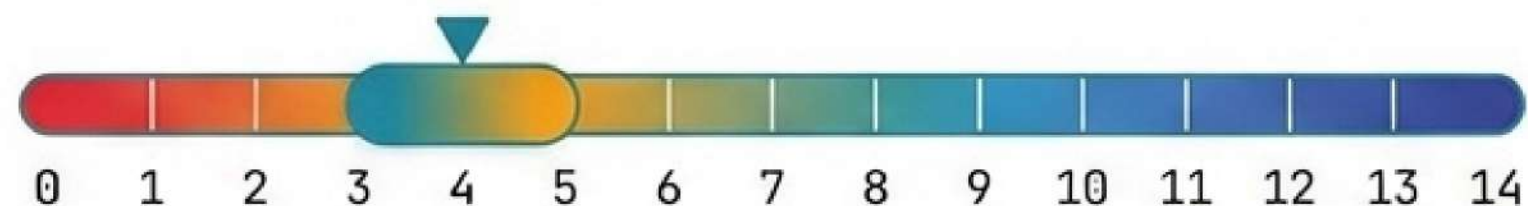


JetBrains Mono
Disinfection of
contaminated substrates.



TECHNICAL VITAL STATS

ACIDITY PROFILE



pH 3.0 – 5.0

DENSITY



1.05 kg/L

APPEARANCE



Transparent / Yellowish

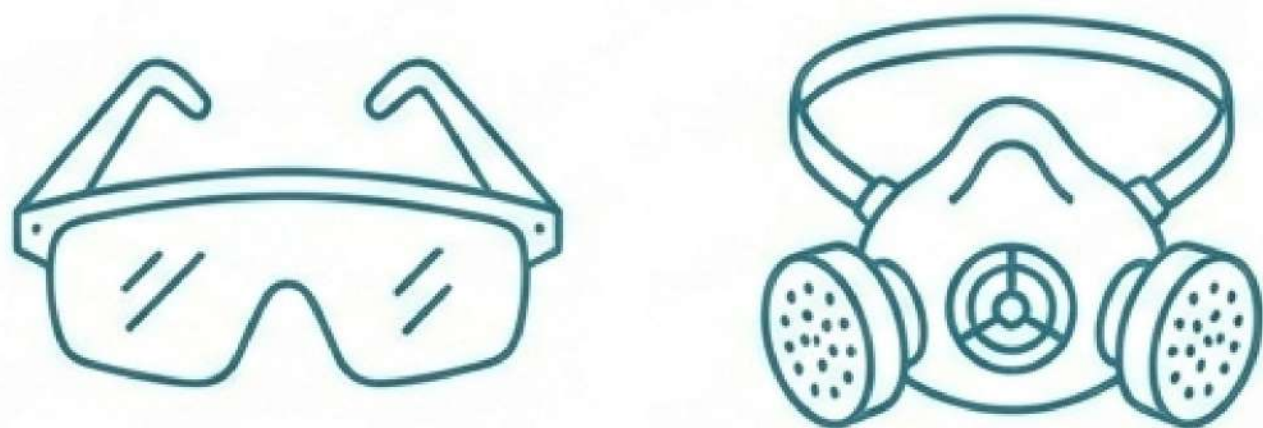
REPAINT INTERVAL



Wait 3–4 Hours before coating

SAFETY & CONSTRAINTS

PROTECTION



Use PPE. Apply in well-ventilated areas to avoid inhaling steam.

ENVIRONMENT & STORAGE



No discharge into sewers.



Store between 5°C – 45°C.



Open Container
Expiry: 15 Days

THE SUBERLEV SYSTEM



STEP 1: TREAT



STEP 2: INSULATE



STEP 3: PROTECT

Applied by approved professionals.

Falcon Stema S.A.R.L | Monaco | info@falconstema.mc

Help Us Help You

Innovation in Protection.



The information provided is based on extensive practical experience and laboratory tests.
Practical tests are recommended to ensure compatibility for each specific application.