

PRECISION. PERFORMANCE. PROTECTION.




The Professional's Choice for Sprayed Cork
and High-Performance Coatings.

YOUR REPUTATION IS BUILT ON THE FINISH. EVERY DETAIL COUNTS.



Achieving Flawless Results

Inconsistent application can compromise the final look and integrity of a project.



Maximizing Efficiency

Delays and rework on large-scale jobs directly impact profitability and deadlines.



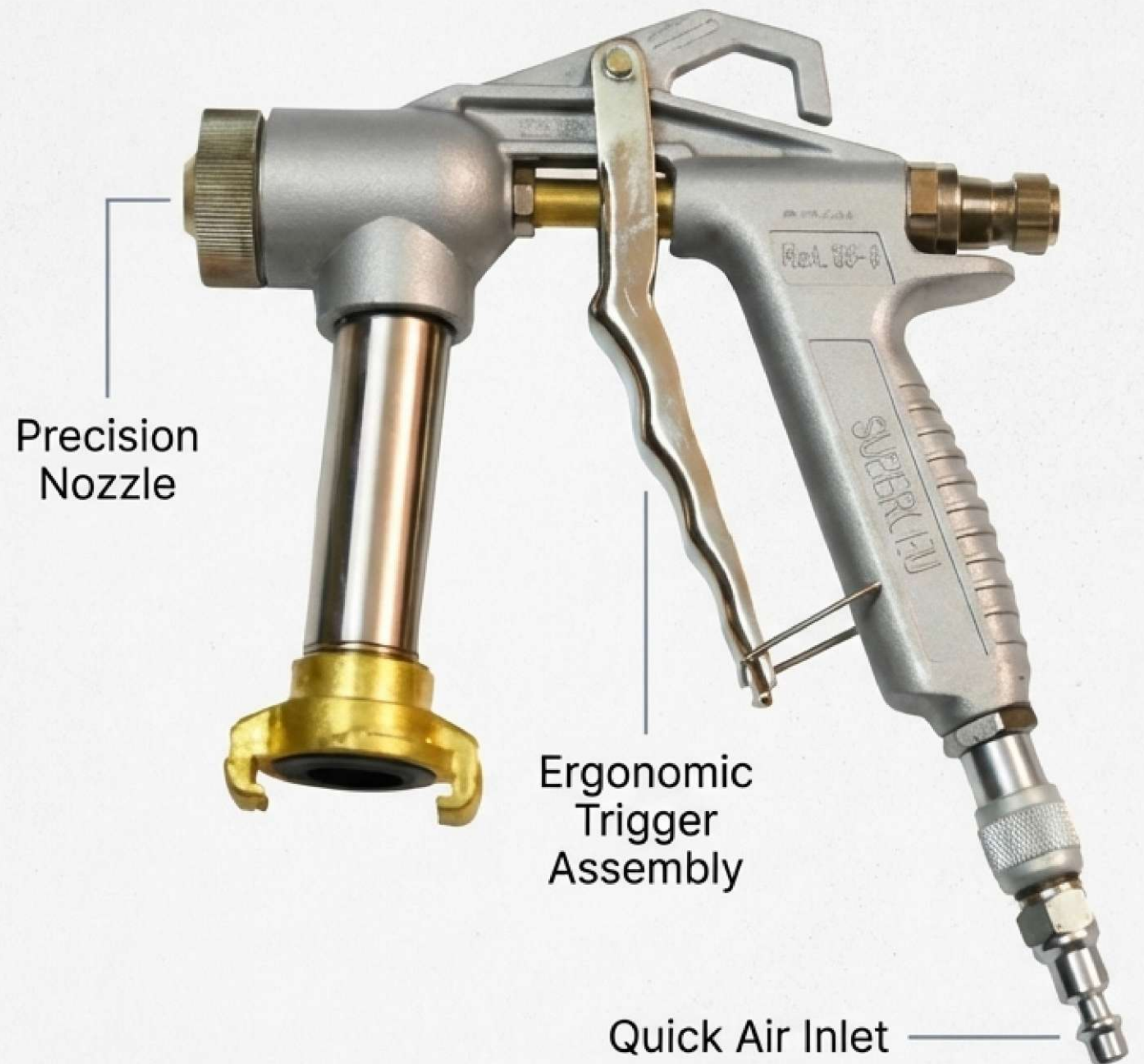
Ensuring Durability

Coatings must provide long-lasting protection against weather, moisture, and wear.

ENGINEERED FOR THE DEMANDS OF OF YOUR WORK.

Introducing the Pressure Projected Cork Gun.

The purpose-built tool for precise and efficient application of sprayed cork, thermal paints, and other high-viscosity coatings. Achieve superior insulation, waterproofing, and professional finishes on every project.



ONE TOOL FOR YOUR MOST DEMANDING APPLICATIONS.

Designed for a wide range of materials and projects, this is the only gun you'll need for:



Sprayed Cork

For superior thermal and acoustic insulation.



Thermal Paints & Thermo-Covers

For energy-efficient building envelopes.



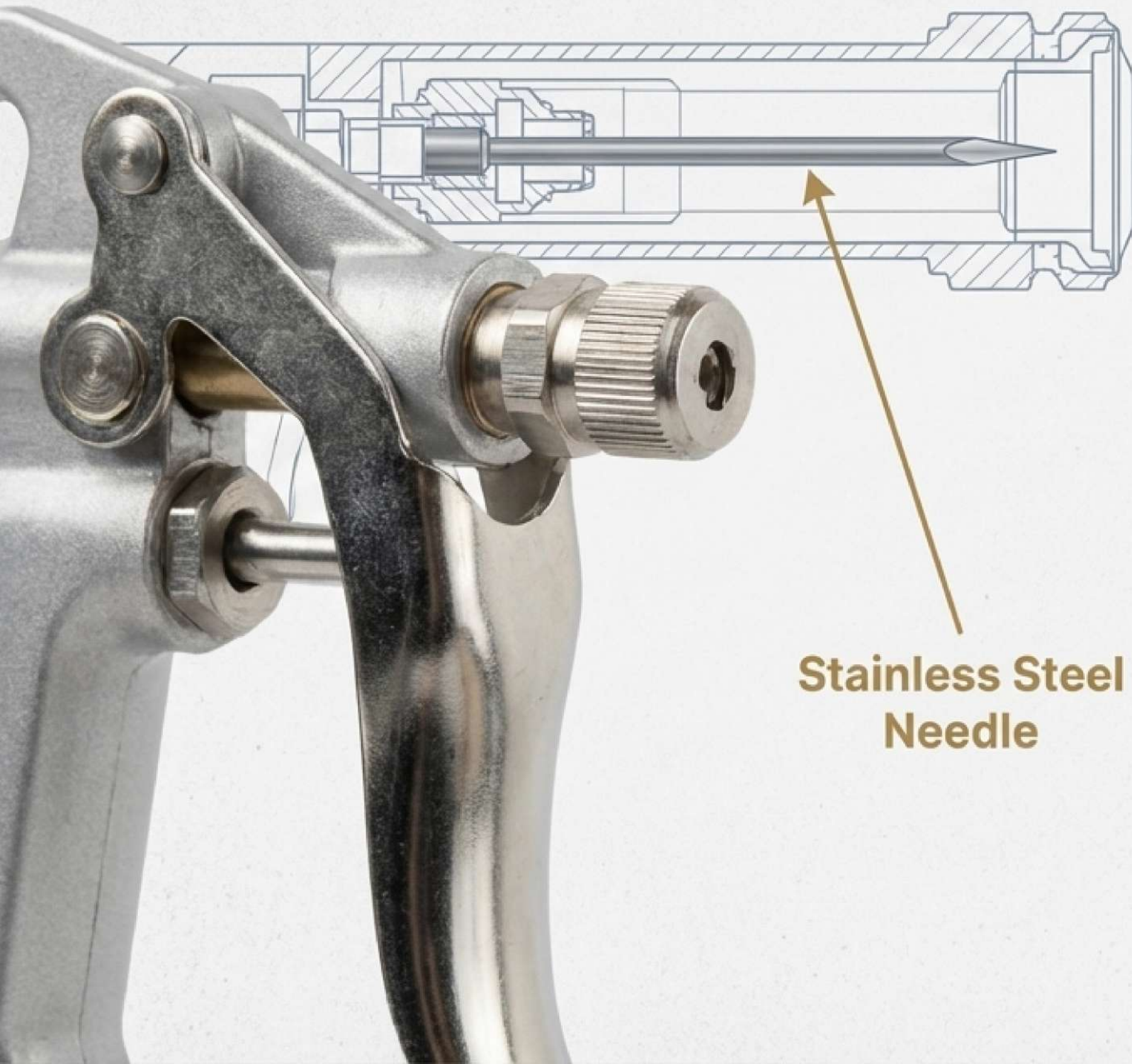
Foamlev

For durable and long-lasting waterproofing (with Ø 8 nozzle).

COVER MORE GROUND, FASTER.

A high product input and output flow rate is engineered for fast, efficient work. Move seamlessly through large-scale projects, reducing application time without sacrificing quality. This is performance that directly impacts your bottom line.





**Stainless Steel
Needle**

ABSOLUTE CONTROL FOR A FLAWLESS FINISH.

Every detail is engineered for precision:

- **Built-in Air Regulation:** Adjust airflow instantly to match the material and surface, ensuring uniform, consistent results.
- **Stainless Steel Needle:** Guarantees a precise and repeatable application, project after project.

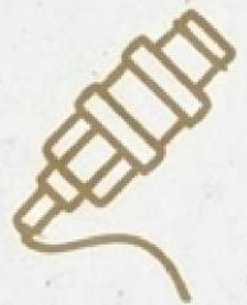
BUILT FOR THE JOB SITE. DESIGNED FOR THE PROFESSIONAL.



Durability: Constructed with high-quality materials to withstand demanding conditions.



Ergonomics: A thoughtfully designed grip and integrated trigger lock reduce fatigue during prolonged use, allowing you to work comfortably and efficiently all day.

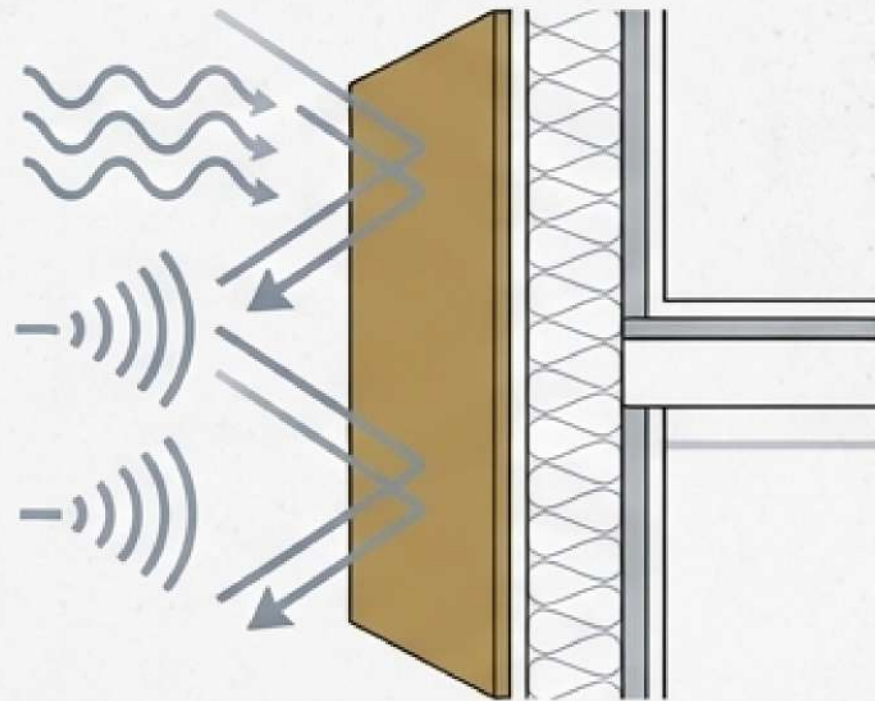


Simplicity: The quick plug allows for fast, easy connection to your air source, minimizing setup and downtime.



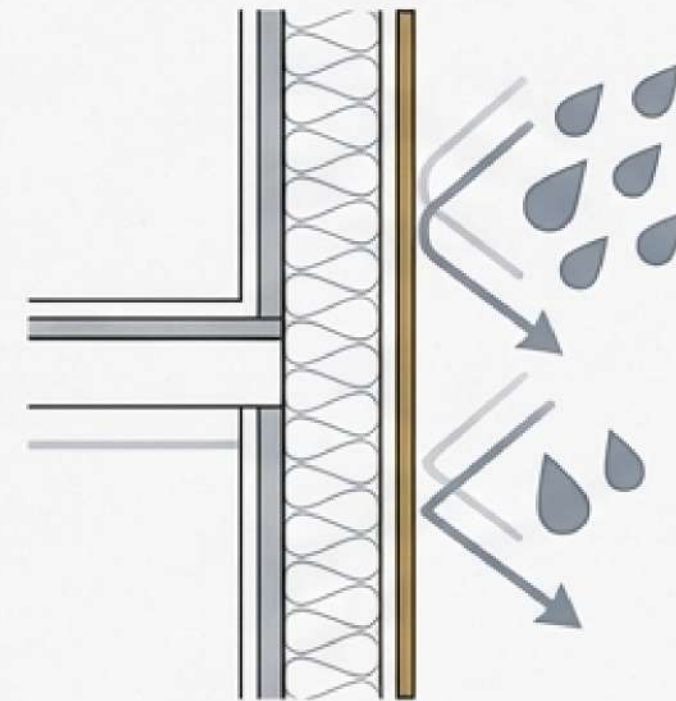
DELIVER LASTING PROTECTION AND PERFORMANCE

The precise application of specialized materials with this gun results in powerful, tangible benefits for any structure.



Superior Thermal & Acoustic Insulation

Improve interior comfort and reduce energy consumption, leading to significant long-term cost savings.



Effective, Durable Waterproofing

Create a seamless barrier that protects structures from moisture, leaks, and water damage, ensuring the building's longevity.

THE SIGNATURE OF A PROFESSIONAL: A PERFECT FINISH.

The gun's ability to deliver a precise and uniform application of material is the key to a high-quality, professional finish. Enhance the aesthetics of any surface, from broad walls to complex architectural details, and deliver results that speak for themselves.



BOOST YOUR EFFICIENCY. REDUCE YOUR COSTS.

The gun's high flow rate and ease of use directly translate into optimized project timelines and resource management.



Complete jobs
faster.



Minimize material
waste.



Reduce operating
costs.

This isn't just a tool; it's an investment in your productivity.

THE PROFESSIONAL'S ADVANTAGE, SUMMARIZED.



PRECISION

Achieve flawless, uniform finishes with total control over air and material flow.



EFFICIENCY

Maximize your speed and productivity with high-flow performance and easy setup.



VERSATILITY

The single, reliable tool for sprayed cork, thermal paints, waterproofing, and more.

TECHNICAL SPECIFICATIONS.

Applications

Sprayed Cork
Thermal Paints
Thermo-Covers
Foamlev (with Ø 8 nozzle)

Performance

High product input and
output flow rate

Control

Integrated air regulation

Construction

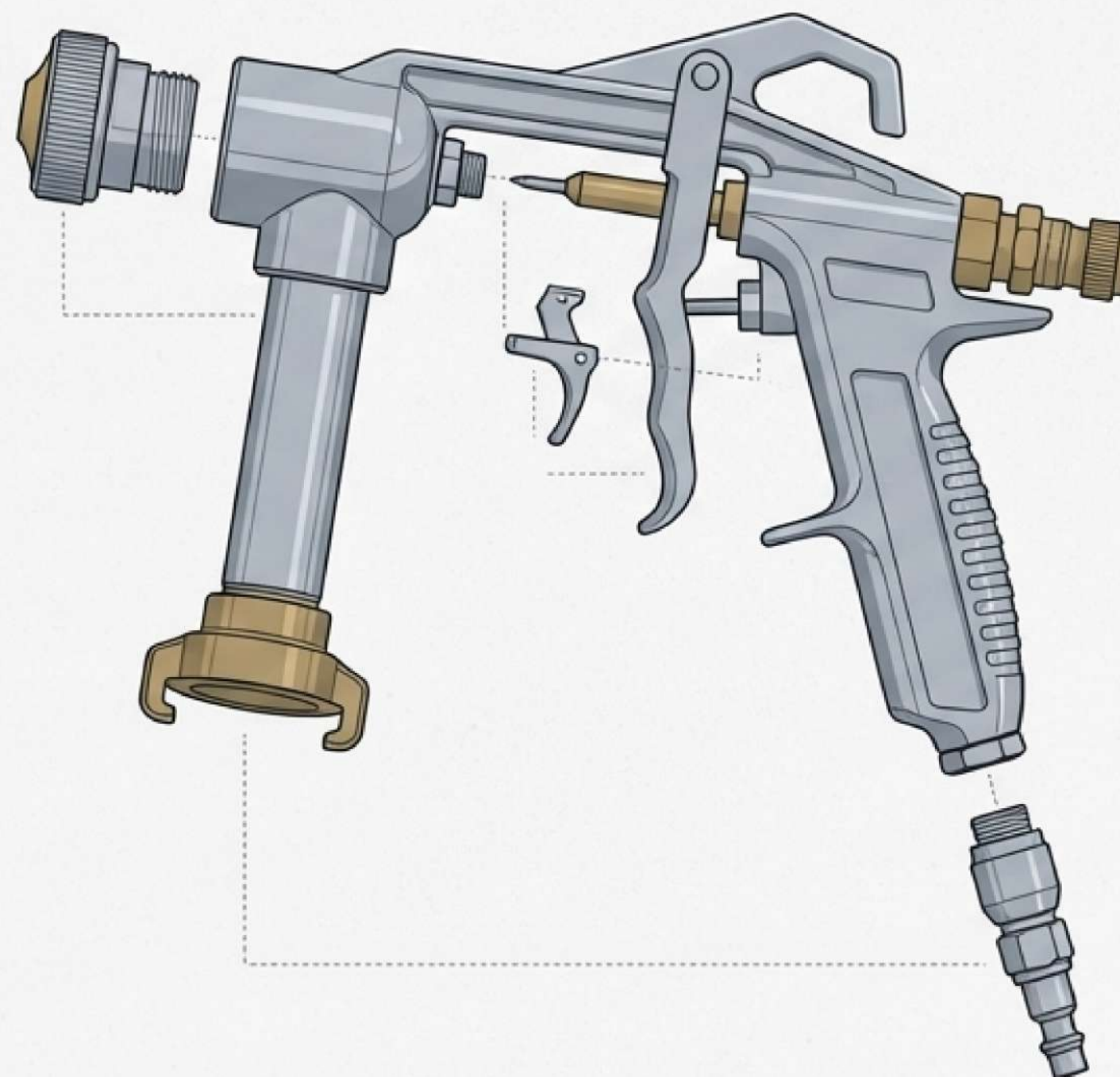
High-quality materials
Stainless Steel Needle

Features

Ergonomic design
Trigger Lock

Connectivity

Quick plug for air source





TAKE THE QUALITY OF YOUR WORK TO THE NEXT LEVEL.

Precision, efficiency, and versatility are more than features—they are the foundation for better results, happier clients, and a stronger business. Invest in the tool that reflects the quality of your craft.

Help Us Help You

Innovation in Protection.



The information provided is based on extensive practical experience and laboratory testing.
We recommend practical tests to ensure compatibility for each specific application.



Falconstema



2bis, Rue de Violettes,
98000 Monaco



info@falconstema.mc



+377 99 90 56 35