



Fine Natural Projected Cork Fine Natural Projected Cork

Technical Application Guide & Methodology

For Facades and Interiors

The Material Composition

COMPOSITION

Expanded natural cork granules, solvent-free resins, inorganic pigments.

STATE

Paste density 0.80 kg/L.



TEXTURE

Fine grain size
0.1 - 0.4 mm.

PERFORMANCE

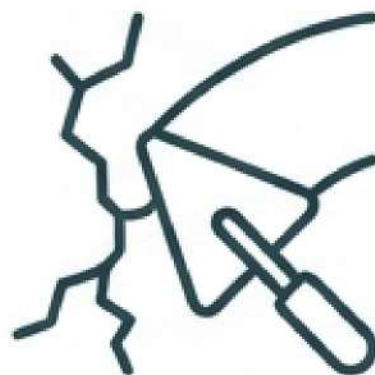
Elastic, Breathable,
Fire Resistant
(Euroclass B - s1 -
d0).

Phase I: Surface Preparation



CLEAN

Remove dust, mold, moss, and degraded paint.



REPAIR

Use Thermal Mastic for defects.



PRIME

Apply Suber-Fix on absorbent surfaces.

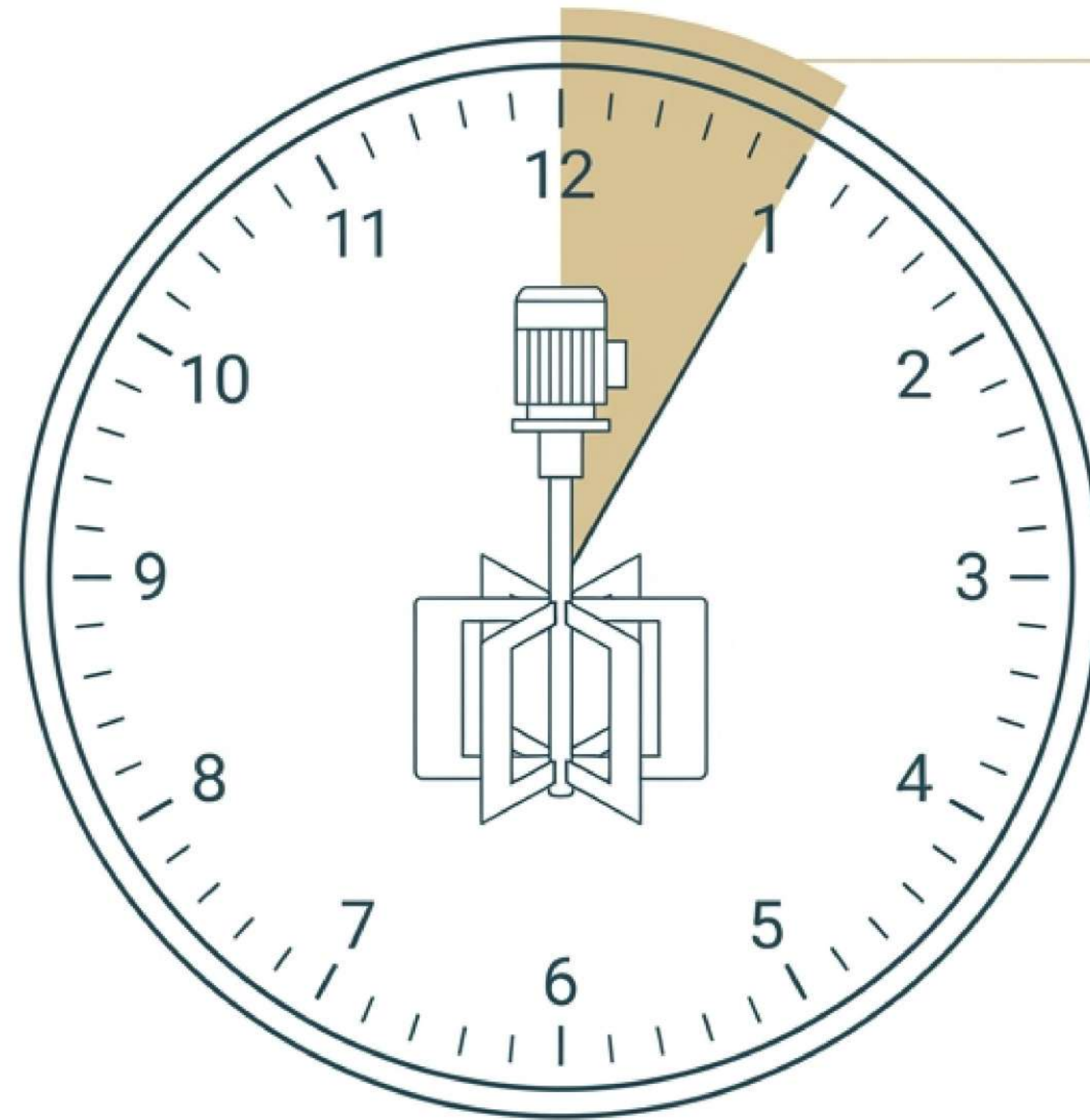
Concrete	Cement	Plaster	BA13
Wood	Galvanized Steel	Ceramic Brick	Natural Stone
EPS/XPS	PVC	Glass	Stoneware

GOLDEN RULE:

Surface must be clean, dust-free, and completely dry.

Phase II: The Mixture

TOOL: High-speed industrial mixer.



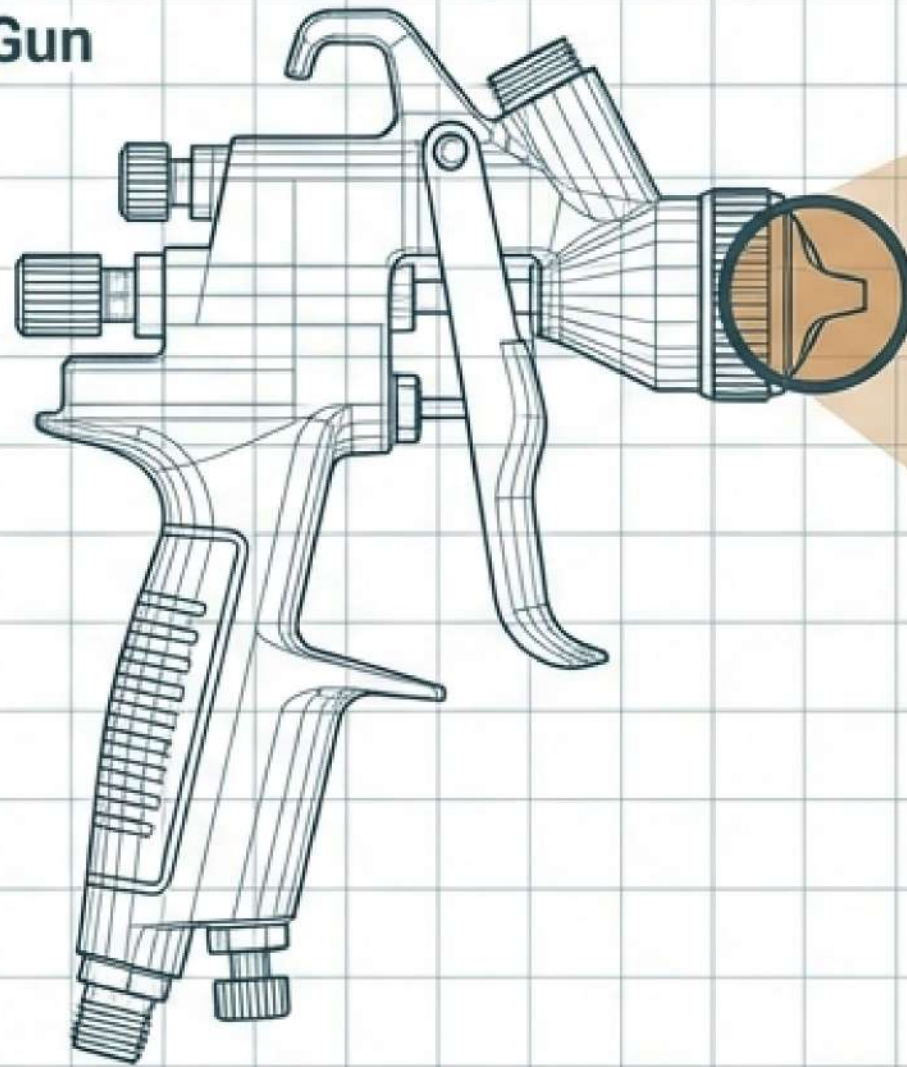
3-5 MINUTES
Mixing Time

ADJUSTMENT:
Max 200 mL water.

CAUTION: Do not let product dry on container walls.
Clumps will clog the spray gun.

Phase II: Equipment Specifications

Suberlev Spray Gun
Roboto Mono



5.50 mm

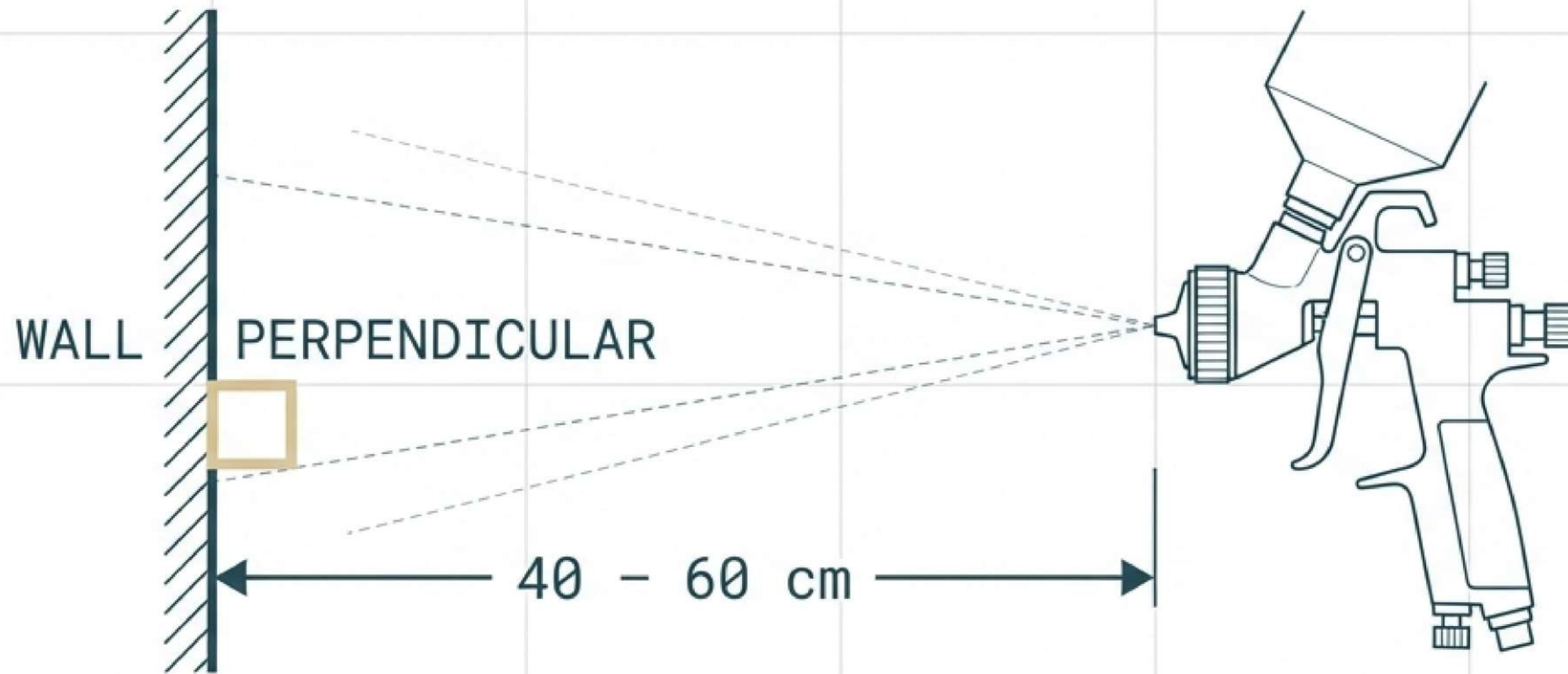
NOZZLE SIZE

Roboto Mono

COMPRESSOR FLOW: Min 250 L/min
Roboto Mono, Graphite Grey



Phase IV: Projection Technique



LAYERS

Apply minimum 2 coats.

TEMPERATURE

Range: 5°C to 45°C.

AVOID

Direct sun, wind, rain, frost.

Phase V: Curing & Finishing



CONSUMPTION: 2 kg/m² total

~1.15 mm per coat

POT YIELD: 7-11 m² per 16L unit

Sand • Fill • Varnish • Paint • Plaster

Clean tools with water immediately.

Technical Specifications

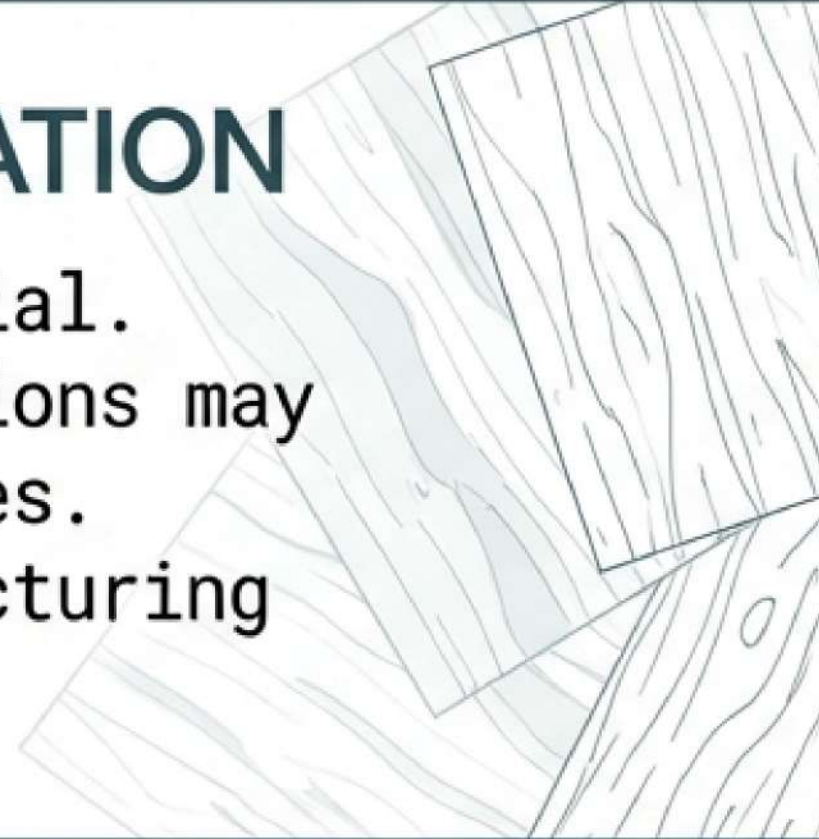
Fire Resistance	Euroclass B - s1 - d0
CE Marked	UNE-EN 1504-2
Thermal Conductivity	0.059 W/m.K
Water Vapor Permeability	Class I
Adhesion	0.9 MPa (Direct tensile)
Skid Resistance	Class 3
Sound Absorption	Type E



Important Considerations

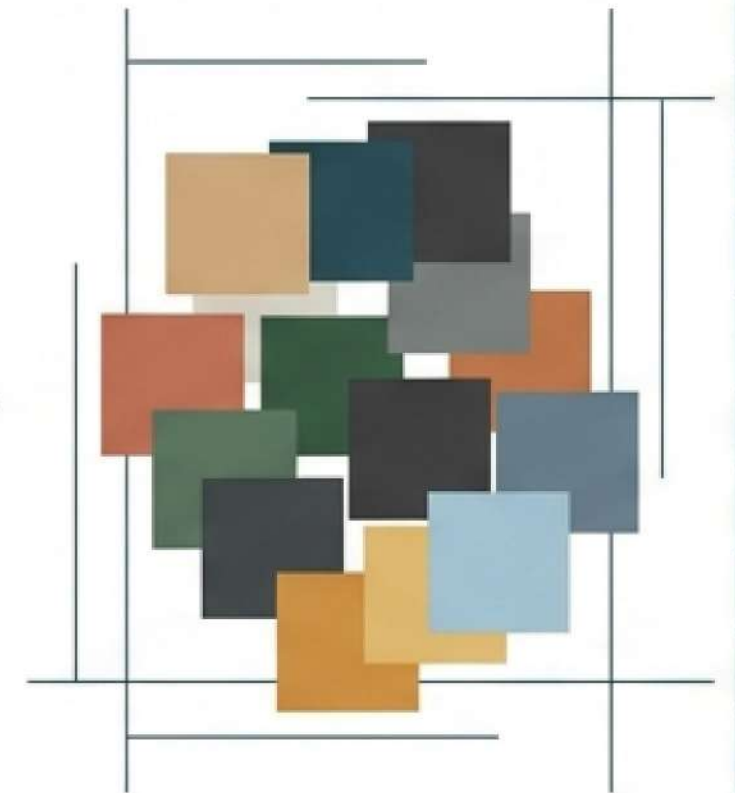
NATURAL VARIATION

Cork is a raw material.
Slight color variations may
occur between batches.
Use the same manufacturing
position per site.



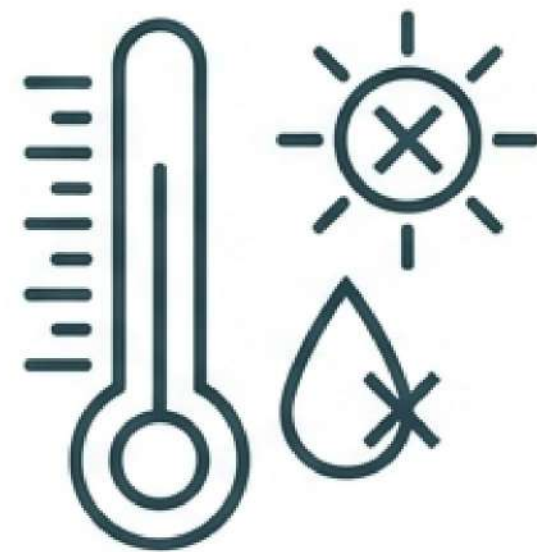
COLORS

Available in 27
colors + natural base.



STORAGE

5–45°C. Protect from
moisture/sunlight.
Shelf life: 2 years
(sealed),
15–20 days (opened).



SAFETY

Do not eat, drink, or
smoke during application.
Keep out of reach of
children.



Help Us Help You

Innovation in Protection.



The information provided is based on extensive practical experience and laboratory tests.
Practical tests are recommended to ensure compatibility for each specific application.