



**CATALOG**



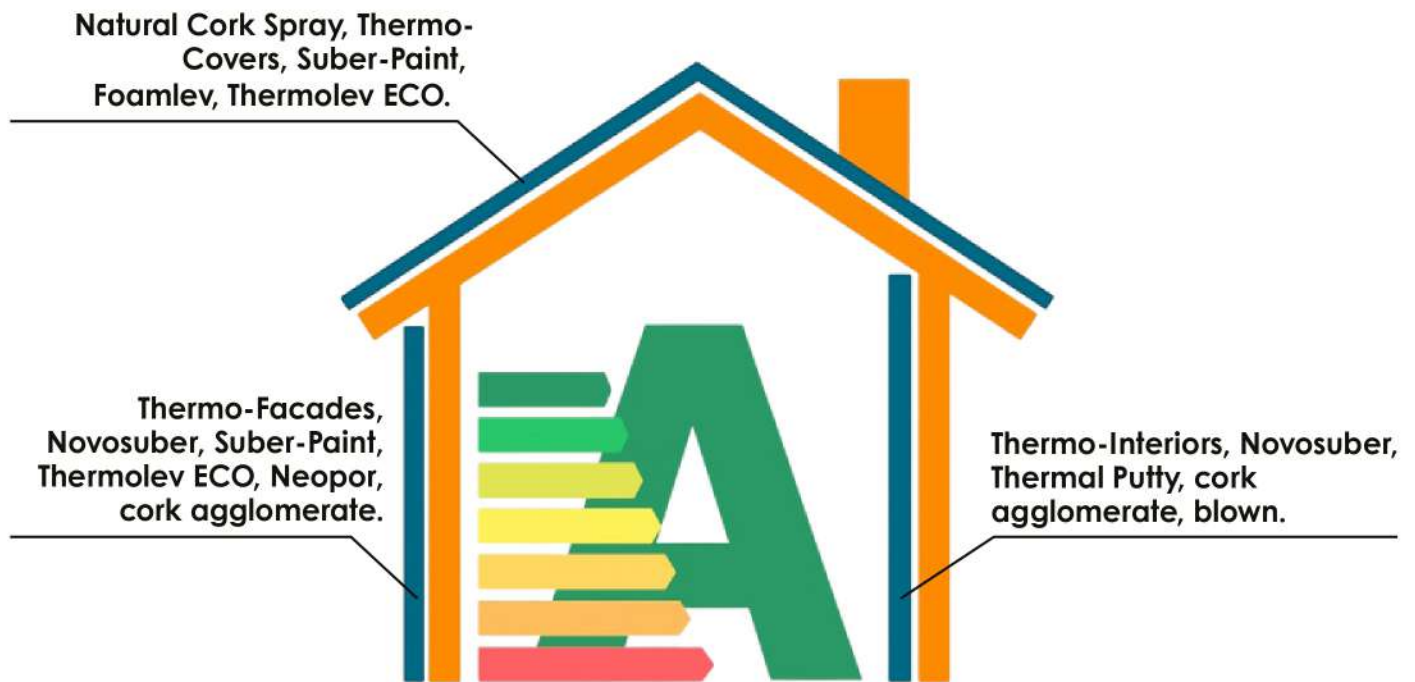
**FALCON STEMA**  
NATURAL TECHNOLOGY

**2026**

Transform your project with Falconstema's Suberlev,  
innovation in thermal and acoustic insulation.



# HIGH TECHNOLOGY IN INSULATION



The Power of Zero Consumption:  
Setting New Standards for  
Sustainable Energy

## FOR A BETTER ENVIRONMENT

The concept of construction materials has remained unchanged for years. Only recently has there been a trend toward modernization and technological development, giving rise to new elements and components that constitute a true revolution in this field, such as SUBERLEV products.



## INDEX Primers, waterproofers and varnishes.

- 4 Fungilev / Suber-fix / Suber-oxid.
- 5 Anti-graffiti nanotechnology / Aggregate compaction resin.
- 6 PU Primer + PU Membrane / Pure acrylic membrane.
- 7 Walkable Varnish / Artificial and thematic stone varnish / Invisible water-repellent varnish.

## Thermal insulation and correctors.

- 8 Thermo-interiors.
- 9 Anti-bacterial thermo-interiors / Bactilev.
- 10 Thermo-facades.
- 11 Anti-insect thermo-facades / Mosquilev.
- 12 Thermo-shield covers / Thermo-shield skylights.
- 13 Natural cork products.
- 14 Sprayed natural cork.
- 15 Novosuber / Novosuber dry.
- 16 Suber-Paint / Microlev microcement.
- 17 Flexible Thermal Putty / Suberconfort dry putty.
- 18 Foamlev.
- 19 Thermolev eco / Flexilev eco.
- 20 Sate plates / Suber-neopor / Cork agglomerate.
- 21 Blown: Neolev / Natural cork / Pearl compaction resin.
- 22 Thermal films / Thermal film application spatula.
- 23 Thermal film: Nanoceramic / Silver / Frost.

## Anti-radiation insulation.

- 24 Anti-radiation paint / Grounding / Nature shielding curtain.
- 25 Anti-radiation headphones / Anti-radiation protector mobile phone case / Professional measurement.

### Machinery and application tools.

- 26 Guns: Special blowguns and mortars / Application of sprayed cork /
- 27 Special mortar projection.  
Machines: Industrial application of sprayed cork / Cork and mortar spraying / Pearl compaction equipment.

## Lighting, ventilation and accessories.

- 28 Suber-tube solar tube / LED-in solar tube system.
- 29 Lev-filter blown anti-condensation / Solar extractor under cover / Adjustable industrial extractor.
- 30 Levfilter eco / Levfilter eco duo.
- 31 Levfilter eco 220.
- 32 Thermography.

## Marketing and other services.

- 33 Services.
- 34 Display furniture.

## Color chart.

- 35



## FUNGILEV



Sanitizing wall and floor cleaner based on a broad-spectrum aqueous solution that combats bacteria, yeast, mold, and algae. Highly effective for preparing and disinfecting already cleaned, contaminated surfaces, as a pretreatment before applying paint, sprayed cork, and so on.

1 L.	5 L.
Ref. 025	Ref. 026

Application	Approximately 0.15 L/m <sup>2</sup> .
Performance	Apply by brush, roller, or spray, in one or two coats, depending on the degree of contamination.

## SUBER-FIX



Acrylic primer-fixative for facades and roofs, which acts as a super-penetrating, nanotechnology-based sealer for lime, tempera, plaster, cement, baked clay, etc. surfaces where maximum penetration, adhesion, and consolidation of the substrate are required.

750 ml.	4 L.	15 L.
Ref. 001	Ref. 002	Ref. 003

Drying	1-2 hours.
Repainting	3-4 hours.
Performance	0.04 L/m <sup>2</sup> (4L = 100 m <sup>2</sup> ; 15L = 375 m <sup>2</sup> ). Depending on the absorption of the support.
Dilution	4 parts water to 1 part fixative, depending on surface absorbency.



## SUBER-OXID



High-strength, protective water-based primer for metals. A 3-in-1 product: it targets rust directly, as it includes rust neutralizers so it can be applied to oxidized metal; it also contains anti-oxidant protectants to prevent metal oxidation, both at the time of application (flash rust) and from outdoor exposure over time. It's very easy to apply and low in odor.

2.5 L.	15 L.
Ref. A336	Ref. A337

Performance	0.40 L/m <sup>2</sup> .
Dry touch	2-3 hours.

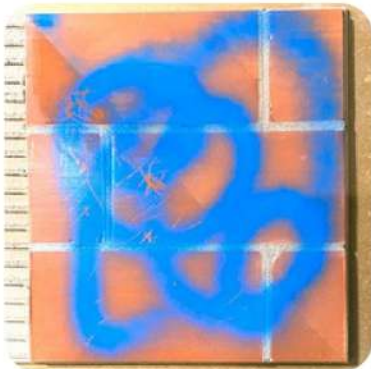
750 ml.	3 L.
Ref. A358	Ref.024

## ANTI-GRAFFITI NANOTECHNOLOGY

Treatment that protects the surface from future acts of vandalism, such as graffiti, markers, and animal urine, etc. It prevents graffiti from penetrating the surface by creating a continuous, waterproof film. This way, it can be easily cleaned with very hot water and root brushes (we recommend a steam cleaner). The application does not alter the appearance of the treated surface, and only one coat is required for the product to be effective (a reminder coat after cleaning is recommended).



Performance	0.30 - 0.40 L/m².
Dry touch	6-12 hours.



4 L.	15 L.
Ref.016	Ref.017

## RESIN COMPACTION AGGREGATES

Methacrylic resin for mixing with aggregates and decorative stones to recreate floors in parks, gardens, tree pits, and paths, creating walkable, resilient, and water-draining floors, applied horizontally.



Application	Spray-applied or compacted with aggregates.
Performance	6-8 L of resin per 100-125 kg of aggregates.
Dry touch	8-12 hours.
Dry transit	24-48 hours.





## PRIMER P.U. + MEMBRANE P.U.



PROFESSIONAL USE ONLY

Water-based bonding agent to ensure the adhesion of the polyurethane membrane to porous and difficult-to-adhere surfaces.

Performance 0.15 - 0.20 L/m<sup>2</sup>.



4 L. 15 L.  
Ref. 010 Ref. 011

One-component, water-based liquid polyurethane membrane. Elastic, waterproof, and of excellent quality for terraces, roofs, and outdoor traffic areas where water infiltration needs to be prevented and insulated. Its perfect balance of elasticity and hardness allows it to form a continuous film without joints or seams.



Certified by AIDICO according to EN 1542 adhesion standard and EN 1062 impermeability standard.

Performance	On roofs and terraces, apply 1.2 to 2.2 L/m <sup>2</sup> . A minimum of 2-3 coats is recommended.
Drying feel	6-8 hours.
Repainting	10-12 hours.
Color	White, gray, red, or green. Other colors available.

## PURE ACRYLIC MEMBRANE

4 L. 15 L.  
Ref. 012 Ref. 013



Elastic waterproofing coating for terraces, roofs, walls, and semi-trafficked outdoor areas, where water infiltration must be prevented and insulated. Its perfect balance of elasticity and hardness allows it to form a continuous film without joints or seams.

Performance	On facades, apply 0.75 L/m <sup>2</sup> . On terraces, apply 1.2 to 1.8 L/m <sup>2</sup> .
Drying feel	2-4 hours.
Repainting	8-12 hours.
Colors	Transparent.

4 L.	15 L.
Ref.014	Ref.015

Traffic-resistant varnish made from acrylic and methacrylic resins. Dilutable up to 25%, it protects waterproofing and elastic paints in general, applied horizontally, microcements, and stamped concrete that require high traffic.

Performance	0.15 - 0.30 L/m <sup>2</sup> .
Dry touch	2-3 hours.

## WALKABLE VARNISH



4 L.	15 L.
Ref.018	Ref.019

## ARTIFICIAL AND THEMATIC STONE VARNISH

Water-based varnish for applications on facades, artificial stone recreations and thematic exposed brickwork, single-layer mortars, or natural stone, to which it provides water repellency and protection.

Performance	0.15 - 0.30 L/m <sup>2</sup> .
Dry touch	2-3 hours. Satin-finish
Color	colorless.



## INVISIBLE WATER-REPELLENT VARNISH

750 ml.	4 L.	15 L.
Ref.020	Ref.021	Ref. 022

Siloxane-based water-repellent varnish for application on exposed brick facades, single-layer mortars, or natural stone, giving it water repellency. Colorless appearance.

Performance	0.15 - 0.30 L/m <sup>2</sup> .
Dry touch	2-3 hours.





# THERMO-PAINT SHIELD

## THERMO-INTERIORS



750 mL	4 L.	15 L.
Ref. A230	Ref. 029	Ref. 030

### NEW FORMULA



MORE GREEN-FRIENDLY. LOW ODOR. ANTI-DRIP PAINT. FINER FINISH.

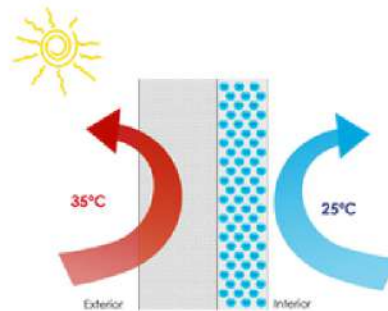
Excellent quality paint with very low thermal conductivity, thanks to the incorporation of nanotechnology-based hollow nanospheres in its formula. This provides energy savings by preventing heat transfer, making it an ideal paint for both hot and cold climates.

It is sound-absorbing, with the nanospheres exerting a sound-dampening effect. It is thermally insulating and anti-condensation, as it does not promote internal and external heat exchange.



Color	White, Color Chart 400 colors, or NCS Color Chart.
Finish	Matte.
Diluent	Water.
Drying Time	1 hour (at 20°C and 60% relative humidity).
Repainting Time	4-6 hours (at 20°C and 60% relative humidity).
Performance	Recommended minimum consumption of 350 ml/m².
VOCs	Category a/BA 75/30 (2007/2010): 0.16.
Washability	Class 2.
Application	Brush, roller, or suitable spray gun.

\* Possibility of creating colors with water-based or universal dyes.  
Possibility of purchasing bases for the tinting system.



THERMAL PAINT PREVENTS HEAT FROM PASSING THROUGH IT, PREVENTING LARGE ENERGY LOSSES



AIDICO certified according to UNE-EN 7783/2. Reaction to fire according to UNE 23727:90. Acoustic absorption coefficient according to UNE-EN ISO 354:2004. LGAI Technological Center

	Ref.031 750 ml	Ref.032 750 ml	Ref.033 750 ml	Ref.034 750 ml	Ref.035 750 ml	Ref.036 750 ml	Ref.037 750 ml	Ref.038 750 ml
+4 L white								
+15 L white								



4 L.	15 L.
Ref. 042	Ref. 043



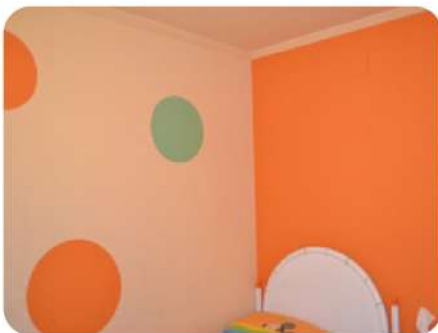
## ANTIBACTERIAL THERMO-INTERIORS

NEW FORMULA

MORE GREEN-FRIENDLY. LOW ODOR.  
ANTI-DRIP PAINT. FINER FINISH.

Interior plastic paint with thermal and antibacterial properties. Formulated with acrylic copolymers in aqueous dispersion and nanotechnological additives. It exhibits antimicrobial action: it incorporates silver ions that make the dry film of applied paint resistant to the growth of bacteria and mold.

Its special qualities of whiteness, coverage, application, and peculiarly low odor make it a highly suitable paint for painting public centers, shops, hospitals, residences, hotels, daycare centers, schools, etc.



250 ml.	1 L.	5 L.
Ref. A340	Ref. A339	Ref. A341

**NEW**

## BACTILEV

State-of-the-art disinfectant based on silver and quaternary ammonium ions. Suitable for disinfecting all types of metal or varnished surfaces (handrails, knobs, handles, grill grates, furniture, doors, tables, etc.), clothing, tools, as well as contact with all types of animals.



# THERMO-PAINT SHIELD

## THERMO-FACADES



750 ml.	4 L.	15 L.
Ref. 039	Ref. 040	Ref. 041



Excellent quality paint with very low thermal conductivity, thanks to the incorporation of hollow nanospheres and nanotechnology-based reflective pigments in its formula. These provide energy savings by preventing heat transfer, making it an ideal paint for both hot and cold climates.

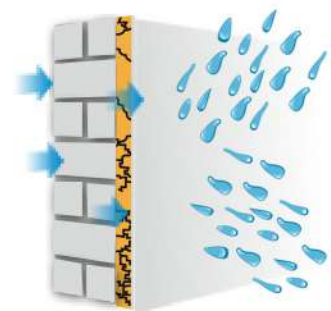
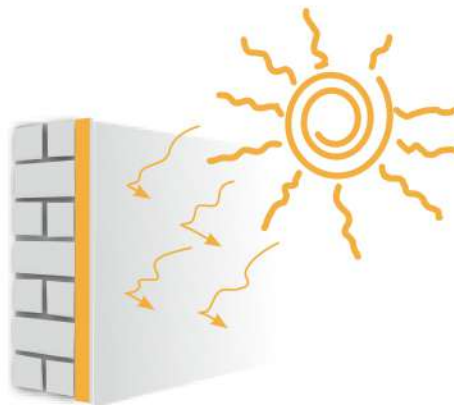
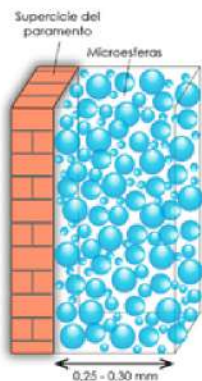
It is sound-absorbing, with the microspheres exerting a sound-dampening effect. It is thermally insulating and anti-condensation, as it does not promote heat exchange. Indoor and outdoor use.



AIDICO certificate.  
according to standard "UNE-EN 7783/2.  
Reaction to fire standard  
UNE 23727:90  
Sound absorption coefficient  
UNE-EN ISO  
354:2004  
LGAI Technological Center

Color	White, 400 Colour Chart or NCS Chart.
Finish	Matte.
Diluent	Water.
Drying Time	1 hour (at 20°C and 60% relative humidity).
Repainting Time	4-6 hours (at 20°C and 60% relative humidity).
Performance	Recommended minimum consumption of 350 ml/m².
VOCs	Category a/BA 75/30 (2007/2010): 0.16.
Washability	Class 2.
Application	Brush, roller, or suitable spray gun.

\* Possibility of creating colors with water-based or universal dyes.  
Possibility of purchasing bases for the tinting system.





4 L.	15 L.
Ref. 044	Ref.045



## ANTI-INSECT THERMO-FACADES

NATURAL PRODUCT BASED ON  
NON-TOXIC EUCALYPTUS OILS

Thermal paint that repels all types of insects and mites. Its innovative technology based on polymeric microcapsules allows for a slow release of repellents, acaricides, and pest control agents. Insect growth, provides high persistence and zero toxicity. Insect repellent paint controls pests in public health, veterinary medicine, and the food industry. It is highly effective against all types of insects. It is ideal for indoor and outdoor areas with high insect infestation. of homes, offices, health centers, schools...



Repels insects, releasing  
natural substances derived  
from of essential oils

1 L.	5 L.
Ref. A353	Ref. A354

**NEW**

## MOSQUILEV

Complementary product to add  
to your regular floor and wall  
cleaner to enhance its insect-  
repellent properties. Composed  
of citrodiol, citronella, and  
components of natural essences.



## SHIELD THERMO-COVERS



WATERPROOF AND THERMALLY INSULATES



4 L. Ref. 047	15 L. Ref. 048	15 L. - 7 years Ref. A301
------------------	-------------------	------------------------------

Excellent quality waterproofing and thermal corrector, which acts as a protective shield for roofs and facades. Water-based coating with acrylic resins, premium, next-generation polyurethane, hollow nanospheres, and reflective pigments. Provides thermal insulation and heat regulation (reduces interior temperatures in homes and industrial buildings). Adhesion even on galvanized. Reduces the temperature between 4°C and 25°C depending on the outside temperature and the surface where it is applied. Suber-Oxid is recommended for treating any oxidized surface and providing added protection. Apply Suberlev Walkable Varnish to increase walkability and facilitate cleaning.

Performance	On facades, apply 0.8 - 1.5 L/m <sup>2</sup> . On roofs, apply 0.8 - 2 L/m <sup>2</sup> , depending On the application, in multiple layers.
Colors	White and custom colors available upon request.
Diluent	Water.
Application	Brush, roller, or suitable spray gun.
Solar Reflectance Factor	83.9% (ASTM G173 - 03).
Emissivity	0.75 (ASTM C1371 - 04a(2010)e1).
Heat Flow Reduction	73.84% (UNE-EN 1062-3).
Water Permeability	0.01 kg/(m <sup>2</sup> · h <sup>0.5</sup> ) (EN 1504-2).

## SHIELD THERMO-SKYLIGHTS



2,5 L. Ref. A241	15 L. Ref. 052
---------------------	-------------------

Thermal corrector for skylights, whether made of polycarbonate, fiberglass, glass, etc. High insulating capacity both in summer (reduces the entry of heat and ultraviolet rays) and in winter. It allows light to pass through, but prevents the passage of infrared radiation that generates excessive heat and ultraviolet rays that damage furniture and merchandise inside, as well as causing annoying glare.



Performance	If only thermal insulation is required, apply 0.15 L/m <sup>2</sup> . If thermal insulation and waterproofing are required, apply 1.5 L/m <sup>2</sup> of Pure Acrylic Membrane beforehand.
Drying	4 to 10 Hours at 20° C and 60% RH.
Colors	Translucent.
Thinner	Water.
Finish	High satin.



# NATURAL CORK PRODUCTS

Cork is the bark produced by the cork oak (*Quercus suber*) and protects it from the extreme conditions of the Mediterranean climate. It is a slow-growing tree, with a lifespan of 150-200 years. Its cork bark is removed every 9 to 13 years.



Sierra Espadan



It is a plant tissue formed by cells (cork cells) thanks to which cork achieves many of its qualities, such as elasticity, resistance and durability over time. These cells are filled with suberin, which makes them a moisture-resistant filler with excellent cushioning and thermal insulation. Suberin also has antibacterial, antimicrobial, and other properties, and prevents the cork from deteriorating.

## The main advantages of cork are:

- **Lightness.** It is made up of 90% air, so it has a density very low.
- **Impermeability.** Cork cells are impermeable to liquids and gas, due to suberin.
- **Elasticity.** Its cell membranes have great flexibility that allows them to withstand great pressures without suffering deformations.
- **Durability.** Cork is exposed to adverse weather conditions for hundreds of years, protecting the cork oak without damage.
- **Thermal insulation.** The coefficient of thermal conductivity ( $\lambda$ ) is between 0.03 – 0.04 W/mK for a density of 120 kg/m<sup>3</sup>.
- **Fire resistance.** Cork is a material that is very difficult to burn, does not spread flame, nor emit toxic gases.
- **Acoustic insulation.** As an acoustic insulator, it provides a solution on three levels: airborne sound insulation; impact sound insulation; sound absorption or reverberation time correction. All of this makes it unsurpassed as acoustic insulation.

## Products:

And for all these reasons, cork proves to be one of the best components for manufacturing building materials. At Suberlev, we have been manufacturing and innovating cork-based products since 2008, such as:

- Sprayed Cork.
- Cork flooring.
- Cork Paint.
- Cork panels.
- Thermal Putties.
- Cork blow-in.





# NATURAL CORK PRODUCTS

## SPRAYED NATURAL CORK

roofs and facades



17 (No. DdP: 01)  
EN 1504-2



12 Kg.

Ref. 059-083,A280-A282



High-quality, thin-layer, seamless natural cladding. Specifically designed for thermal correction and waterproofing of roofs and facades, or for encapsulating asbestos fibers (uralite). Weather-resistant product formulated with sterilized natural cork granules, cutting-edge resins, and highly stable inorganic dyes.

Granulometry	0.4 - 0.9 mm.
Application	Suberlev spray gun or projection machine
Recommended Performance	2 kg/m <sup>2</sup> (6-10 m <sup>2</sup> per container).
Thermal Conductivity	0.059 W/m <sup>2</sup> K (EN 12667).
Heat Flow Test	Significant reduction: 69.15%.
Water Vapor Permeability	Class I (EN 1504-2).
Liquid Water Permeability	0.05 kg/(m <sup>2</sup> ·h <sup>0.5</sup> ) (UNE-EN 1062-3).
Direct Tensile Adhesion	9.17 kg/cm <sup>2</sup> and 13.17 kg/cm <sup>2</sup> (UNE-EN 1542).
Slip Resistance	Class 3 (UNE-ENV 12633).
Artificial Aging (3000 cycles)	No change in appearance, cracking, flaking, blistering, or loss of adhesion (UNE-EN ISO 11507).
Fire Resistance:	Euroclass B - s1 - d0 (UNE-EN 13501-1+A1).
Asbestos Fiber Encapsulation (Uralite)	Prevents the dispersion of asbestos fibers (UNI 10686).

## SPRAYED NATURAL CORK

facades and interiors



17 (No. DdP: 01)  
EN 1504-2



12 Kg.

Ref. 084-108,A283-A285



High-quality, fine-grained natural flooring that provides greater breathability to prevent rising damp. It can be used outdoors and indoors, for decoration, etc. Ideal for acoustic correction.

Granulometry	0.1 - 0.4 mm.
Application	Suberlev spray gun or projection machine.
Performance	2 kg/m <sup>2</sup> (7-11 m <sup>2</sup> per container).
Thermal Conductivity	0.059 W/m <sup>2</sup> K (EN 12667).
Heat Flow Test	Significant reduction: 69.15%.
Acoustic Absorption	Class E (UNE-EN ISO 354).
Water Vapor Permeability	Class I (EN 1504-2)
Liquid Water Permeability	0.05 kg/(m <sup>2</sup> ·h <sup>0.5</sup> ) (UNE-EN 1062-3).
Direct Tensile Adhesion	0.9 MPa (UNE-EN 1542).
Artificial Aging (2000 cycles)	No change in appearance, cracking, flaking, blistering, or loss of adhesion (UNE-EN ISO 11507).
Fire Resistance	Euroclass B - s1 - d0 (UNE-EN 13501-1+A1).



12 Kg.

Ref.NEW



## NOVOSUBER

Medium-grain, single-component sprayed cork covering formulated with natural cork, water-based resins, and highly stable inorganic dyes for outdoor use.

Product with thermal properties that helps prevent rising damp and subsequent problems with mold, mildew, and condensation. Breathable, non-toxic and biodegradable material.



Granulometry	0.4 - 0.6 mm.
Application	Gun or Projection Machine Suberlev.
Performance	2 kg/m <sup>2</sup> .
Thermal conductivity	0.061 W/m <sup>2</sup> K (EN 12667).
Water permeability	0.058 kg/(m <sup>2</sup> ·h·0.5) (UNE-EN 1062-3).

5,5 Kg.

Ref. NOVO\_D



## NOVOSUBER DRY

Dehydrated Sprayed Cork. An innovative cork covering that serves as protection, decoration, and insulation for both interior and exterior surfaces. It is a thermo-insulating, flexible, permeable product with great adhesion to different types of substrates. It stands out for its innovative packaging process. It's a material that optimizes both weight and volume for domestic and international transport.



Yield	1-2.5 kg/m <sup>2</sup> (depending on application).
Thickness	3 mm total.
Application	Projected with Suberlev gun.
Drying	4-6 hours (under normal conditions).
Thinner	6 L of water for every 5.5 kg of product.
Thermal Conductivity Direct	0.052 W/m <sup>2</sup> K (EN 12667)
Tensile Adhesion	1.8 MPa (A:B =10%: 90%) (UNE-EN 1542)



# NATURAL CORK PRODUCTS

## SUBER-PAINT



17 (No. DdP: 03)  
EN 1504-2

4 L.  
Ref. A249

15 L.  
Ref. A250



Special anti-crack and anti-carbonation paint for facades and roofs. With very low thermal conductivity due to the incorporation of natural cork microparticles in its formula, in addition to providing energy savings and preventing heat transfer, it also provides extra protection against pollution (carbon dioxide).

It is a product with high coverage and easy application. It is thermally insulating and anti-condensation, as it does not promote heat exchange. Sound-absorbing coating to reduce noise and vibration in industrial machinery.

Application

Performance

Heat flow test

Water vapor permeability

Liquid water permeability

Direct tensile adhesion



Application	Brush, roller, or suitable spray gun.
Performance	0.6–1.5 L/m <sup>2</sup> .
Heat flow test	Considerable reduction: 65.00%
Water vapor permeability	Class I (EN 1504-2).
Liquid water permeability	0.001 kg/(m <sup>2</sup> h0.5) (UNE-EN 1062-3).
Direct tensile adhesion	1.4 MPa (UNE-EN 1542).
Artificial aging (2000 cycles)	No surface defects such as cracks, blisters, flaking, or loss of adhesion are detected. Slight change in gloss. (UNE-EN ISO 11507).

## MICROLEV Microcement

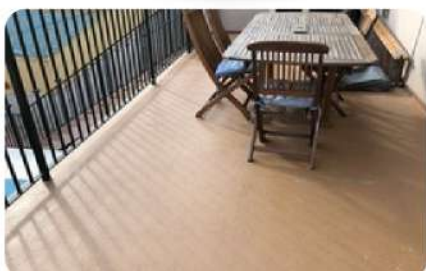


10 L.  
Ref.A351



Very thin-layer cladding composed of natural cork microgranules, micronized cements and metakaolins, high-quality resins, and natural inorganic pigments. It is a flexible product, ideal for floors, walls, and ceilings, achieving continuous surfaces without creating any joints. It offers highly decorative and warm finishes for both interiors and exteriors.

It adheres to a multitude of surfaces: polished stoneware, concrete, clay tiles, parquet, painted surfaces and multiple well-prepared and clean walls.



Application	Trowel, spray gun, or suitable spraying machine.
Performance	1 L/m <sup>2</sup> .
Textures	Medium and fine.
Colors	400-color chart and 28 sprayed cork colors.



4 L.	15 L.
Ref. 133	Ref.134



17 (No. DdP: 02)  
EN 1504-2

## FLEXIBLE THERMAL PUTTY

High-quality putty formulated with cork and glass fibers, which provide thermal and acoustic correction to the surface. It has excellent adhesion to all types of surfaces (stoneware, glass, cement, etc.). It is very flexible, so it absorbs very well. structural movements.

Application	Trowel, spatula or Suberlev spraying machine.
Performance	2 kg/m <sup>2</sup> .
Water Vapor Permeability	Class I (EN 1504-2).
Permeability to liquid water	0.006 kg/(m <sup>2</sup> ·h0.5) (UNE-EN 1062-3).
Direct tensile adhesion	1.0 MPa (UNE-EN 1542).



**AIDIMME**  
INSTITUTO TECNOLÓGICO  
METALMECÁNICO, MUEBLE, MADERA, EMBALAJE Y AFINES

Certified by AIDIMME according to the different standards indicated in the table.

8 Kg.
Ref. A338



## SUBERCONFORT DRY PUTTY

Dry putty with a cement base, cork granules, and glass fibers. Ideal for plastering and smoothing surfaces, and installing systems. SATE, reduction of thermal bridges, etc.

Application	Suberlev trowel, spatula, or spray gun.
Performance	0,55 kg/m <sup>2</sup> y mm.
Thinner	7 L de agua por cada 8 kg de producto.
Thermal conductivity	0,094 W/m°K (EN 12667)
Direct tensile adhesion	0,5 MPa (B=100%) (UNE-EN 1542)
Adhesion on ceramic tiles	1,3 MPa (A/B=30%; B=70%) (UNE-EN ISO 4624)

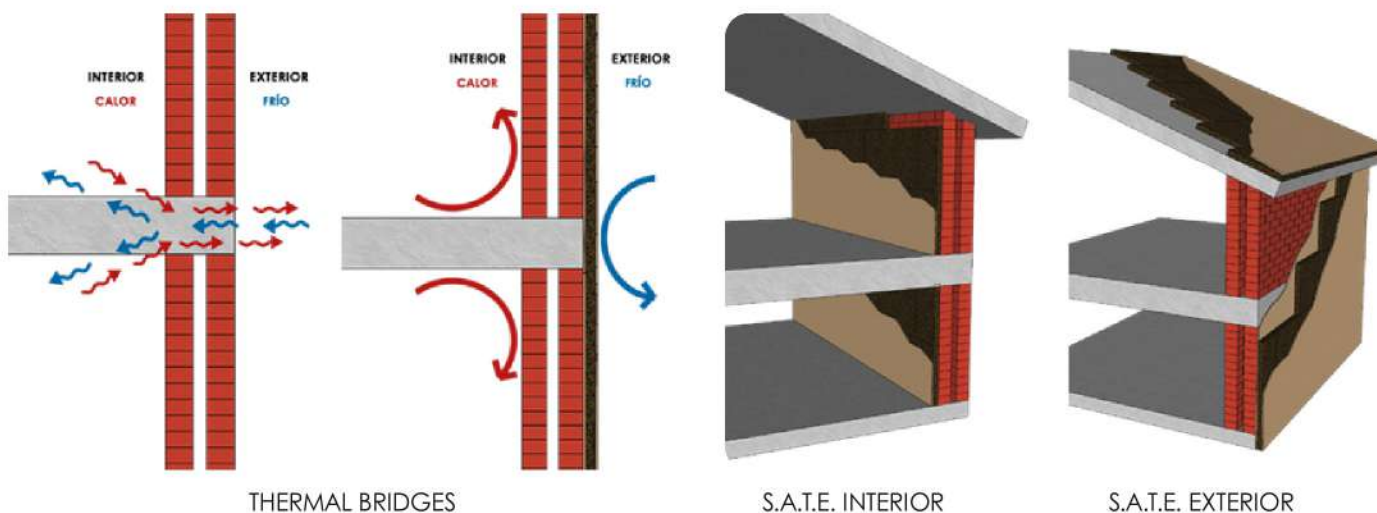


**AIDIMME**  
INSTITUTO TECNOLÓGICO  
METALMECÁNICO, MUEBLE, MADERA, EMBALAJE Y AFINES

Certified by AIDIMME according to the different standards indicated in the table.

# S.A.T.E. SYSTEMS

These are exterior thermal insulation systems. They reduce thermal bridges and decrease temperature variations between the interior and exterior, among other properties. These systems are designed for exteriors, thus avoiding taking up space inside homes. They can also be adapted for the interior of homes, in situations where exterior insulation is not possible. Therefore, they are systems that improve the thermal inertia of the envelope and enhance the value of the building.



## FOAMLEV

**NEW**



18 L.

Ref.A348



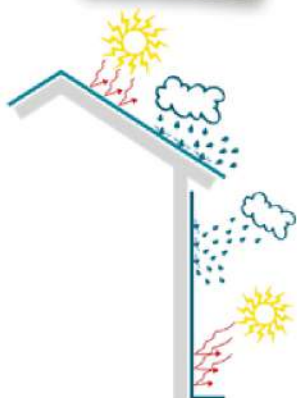
Thin-layer thermal insulation. It consists of expanded polystyrene beads and special additives. This provides single-layer insulation in cases where a complete ETICS system is not possible. It is a flame-resistant product and is highly resistant to outdoor conditions.

Outdoors, apply 1.2 L/m<sup>2</sup> of Thermo-Shield as a protective finish for roofs.

Apply 0.6 L/m<sup>2</sup> of Suber-Paint for vertical surfaces.

Application Performance Thermal Conductivity Bead Size

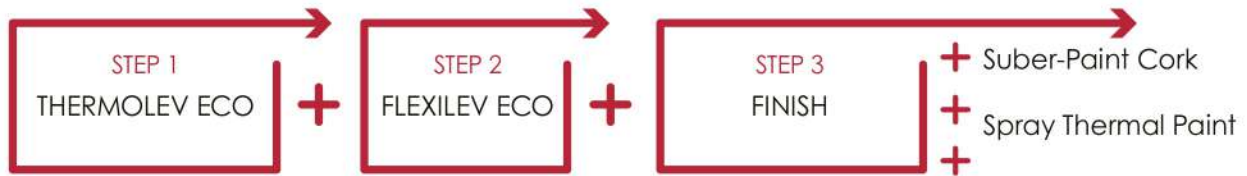
Application	Trowel, spray gun, or suitable projection machine.
Performance	1 L/m <sup>2</sup> per mm (5-30 mm total).
Thermal Conductivity	0.044 W/m <sup>2</sup> K.
Bead Size	1000 – 2000 µm.





## Mineral S.A.T.E. in Three Steps

A sprayed thermal mortar ETICS system, composed of Thermolev ECO, Flexilev Eco, and a finishing material (paint or sprayed cork). This system adapts to any type of surface, creates no joints, and requires no primer on mineral surfaces. It can be applied up to 12\* cm thick without any reinforcement.



\* For thicknesses greater than 12 cm, it is recommended to use a 3 cm hexagonal galvanized metal mesh.



11 kg. (50L aprox.)  
Ref.A325

**AIDIMME**  
INSTITUTO TECNOLÓGICO  
METALURGIA, SOLDADURA, MAQUINARIA Y HERRAMIENTAS



18 No. DdP: 06  
UNE-EN 998-1

**THERMOLEV ECO**

Thermal lime mortar with recycled EPS aggregates and thermo-expanded volcanic rock. Breathable, non-water-absorbing, this product improves thermal and acoustic insulation and corrects capillary damp in interior and exterior baseboards.

Granulometry	≤ 1 - 4 mm.
Application	A canvas or Suberlev projection machine.
Yield	2 - 2,3 kg/m <sup>2</sup> y cm.
Diluent	Agua entre 15 – 18L (por saco).
Thermal conductivity	0,05 W/m <sup>2</sup> K (EN 12667).
Volumetric mass Vapor	220 kg/m <sup>3</sup> ± 20 (EN 1015-10).
Permeability Compressive	μ ≤ 8,7 (UNE-EN 1015-19).
Strength (28 days)	0,40 N/mm <sup>2</sup> .
Flexural strength (28 days)	0,30 N/mm <sup>2</sup> .
Adhesion	≥ 0,06 MPa (UNE-EN 1015-12).
Fire resistance	Euroclase B - s1 - d0 (UNE-EN 13501-1+A1).



12 kg.  
Ref.A335



18 No. DdP: 06  
UNE-EN 998-1

**FLEXILEV ECO**

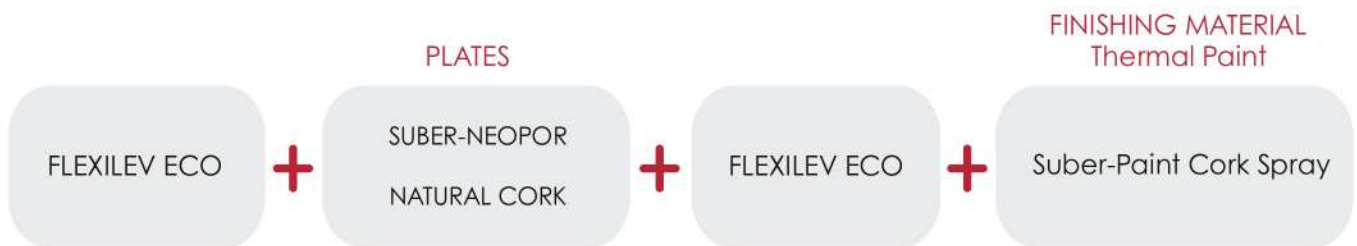
Fiber-reinforced dry mortar, manufactured from hydraulic binders of lime, silica, fiberglass, and other components. It is easy to apply manually, weather-resistant, and offers a smooth finish.

Application	Using a trowel, spatula, or Suberlev spraying machine
Performance	1.10 kg/m <sup>2</sup> y mm.
Thermal Conductivity	0.083 W/m <sup>2</sup> K (EN 12667).
Thinner	Water between 5 and 6 L (per bag).



## SATE PLATES

This system consists of adhesive material, insulation boards, a layer of plaster, and finishing material. It is a dry insulation system, which uses an adhesive, as well as mechanical anchors (fixing plugs and profiles). This easy-to-apply ETICS system achieves energy efficiency values for passive or nearly zero-energy houses.



ADHESIVE



PLACEMENT PLATES



ANCHORAGE



PLASTER



FINISH

## SUBER-NEOPOR



Expanded polystyrene (EPS) plates with encapsulated graphite particles, which give the material very low thermal conductivity.

Dimensions	0,50 x 1,00 m.
Performance Thermal	2 placas/m².
Conductivity	0.029 W/m²K (EN 12667).
Thicknesses	Different thicknesses under minimum order.

## CORK AGGLOMERATE



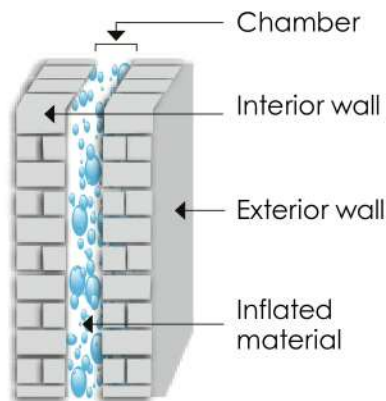
Agglomerated cork panels are made by expanding cork granules with water vapor. This is a completely natural product with no synthetic agents.

Dimensions	0,50 x 1,00 m.
Performance Thermal	2 placas/m².
Conductivity	0.04 W/m²K (EN 12667).
Thicknesses	Different thicknesses under minimum order.



# INSULATED

Dry insulating material for filling air chambers, false ceilings, and roofs in the rehabilitation of homes with insulation deficiencies. The execution of the blown-in insulation only involves making a series of perforations in the wall and does not require any work inside the home. It can be applied from both the interior and the exterior



500 L.

Ref.A251

Dry insulation based on EPS particles with encapsulated graphite. This innovative product stands out for its extremely low conductivity and ease of application.

Thermal Conductivity	0.029 W/m°K.
Granulometry	From 1 to 4 mm.
Capacity	500L. 1 pallet = 4 bags = 2m3.



1130-cpd-1501/08



**NEOLEV**

60 L.

Ref.A208

Natural cork granules specifically designed for use in chambers that require both thermal and acoustic insulation.

Thermal Conductivity	0.050 W/m°K.
Granulometry	0'4-2 mm. Density: 300 kg/m3.
Capacity	60L. 1 palet = 30 sacos = 1,8m3.



1130-cpd-1501/08



**NATURAL CORK**

15 L.

Ref.A344



Single-component resin in aqueous dispersion. Ideal for compacting bead-filled foam (XPS, EPS, etc.) during application.

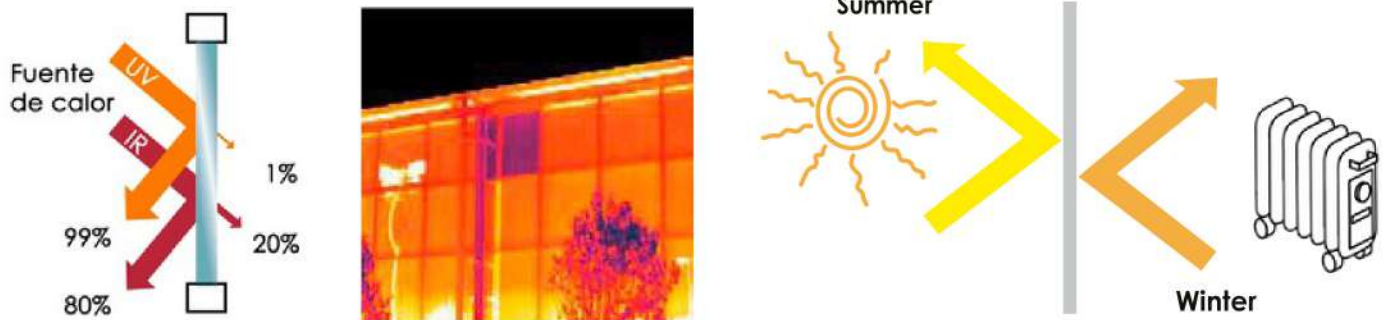
Performance	6-8 L per 500 L of fuel (EPS, etc.).
Diluent	50% water.

**PEARL COMPACTION RESIN**



# THERMAL SHEETS

An innovative thermal film system incorporating ceramic microspheres. When applied indoors, it prevents heat from summer solar radiation and preserves heat output, inside to outside, in winter. With the advantage of nanoceramic technology, applied in thermal sheets, it allows us to create a optimal thermal insulation in the windows, both for winter and summer.



## ASSEMBLY INSTRUCTIONS



CLEANING



CUT



REMOVE PROTECTOR



SPRAY WATER



POSITION SHEET



SPRAY WATER



REMOVE WATER



TRIM EDGES

## THERMAL FILM APPLICATION SPATULA

Ref.  
139



Special spatula for applying Suberlev thermal films. With anti-scratch rubber for easy application.



## NANOCERAMIC THERMAL SHEET

0'76 x 2 m.	0'76 x 4 m.	Whole roll.
Ref. A320	Ref. A321	Ref. 137

Transparent nanoceramic film for insulation in glass.

Presentation	Rolls measuring 1.52 m x 30.5 m = 46.36 m <sup>2</sup> .
	Boxes measuring 0.76 m x 2 m = 1.52 m <sup>2</sup> .
	Boxes measuring 0.76 m x 4 m = 3.04 m <sup>2</sup> .



## SILVER THERMAL SHEET

0'76 x 2 m.	0'76 x 4 m.	Whole roll.
Ref. A316	Ref. A317	Ref. 140

Thermal insulation film (concealment), mirror effect on glass.

Presentation	Rolls measuring 1.52 m x 30.5 m = 46.36 m <sup>2</sup> .
	Boxes measuring 0.76 m x 2 m = 1.52 m <sup>2</sup> .
	Boxes measuring 0.76 m x 4 m = 3.04 m <sup>2</sup> .



## Frost Thermal Film

0'76 x 2 m.	0'76 x 4 m.	Whole roll.
Ref. A318	Ref. A319	Ref. 142

Thermal insulation film (hiding), ice effect in crystals.

Presentation	Rolls measuring 1.52 m x 30.5 m = 46.36 m <sup>2</sup> .
	Boxes measuring 0.76 m x 2 m = 1.52 m <sup>2</sup> .
	Boxes measuring 0.76 m x 4 m = 3.04 m <sup>2</sup> .



TYPE OF SHEET	COLOR	TRANSMITTED LIGHT	I.R. REJECTED	U.V. REJECTED
NANOCERAMIC	Greenish gray	Transparent 68%	84%	>99%
SILVER	very clear Silver	Mirror effect 19%	90%	>99%
FROST	Opal white	Translucent 23%	63%	>99%

# ANTI-RADIATION

## ANTI-RADIATION PAINT



2,5 L.  
Ref.A323



Water-based anti-radiation paint for shielding high and low frequencies on both interior and exterior walls, ceilings, and floors. Can be repainted or wallpapered. New shielding technology prevents radiation from outside and within your own home, eliminating and diverting high- and low-frequency radiation to ground. This prevents entry and exposure to those who live in these homes and suffer frequent exposure to radiation.

Drying	6-8 hours.
Repainting	10-12 hours. Two crosswise brush coats are recommended.
Performance	Recommended consumption: 400 ml/m <sup>2</sup> .

## GROUNDING

Ref.

146



Grounding for interior walls painted with shielding paint. - One grounding point is required per room. Discontinuous walls require one grounding point per section. In large rooms, more than one grounding point may be required. - It will be screwed onto the painted wall, in contact with the paint screen protector. - Must be connected by an electrician. - It has a 1 m ground cable.

## NATURE BLACKOUT CURTAIN

Ref.

148



Special cotton fabric with shielding microfilaments of silver-plated copper thread, for making curtains, blinds, etc. For shielding and protection of windows and doors exposed to radiation, both high and low frequency. Made-to-measure, washable and ironable.

Dimensions	2,50 m x metro lineal.
------------	------------------------



Sport.	Mono.
Ref. 147	Ref. A306

## ANTI-RADIATION HEADPHONES

Special headphones that prevent human absorption of electromagnetic radiation generated by mobile devices, reducing it by up to 98%. They have an innovative system that protects the most sensitive area of the body, the head. In this way, the headphones transport sound through air ducts, instead of conducting radiation to the head, as is the case with conventional headphones.

- Designed with high definition sound level.
- It has a remote button to receive and hang up calls.
- Built-in microphone.
- Compatible with smartphones, tablets, mp3 players and other devices with 3.5mm jack connector.



Ref.
149

## ANTI-RADIATION PROTECTOR MOBILE CASE

Anti-radiation case for mobile phones, which provides a protective shielding effect against electromagnetic waves generated by the devices.

It creates a barrier between the radiation emitted by the mobile phone and the human being.

Reduces radiation by up to 98% without reducing coverage.

The shielding effect is tested and certified by the Energy Technology Institute (ITE).



Ref.
152

## PROFESSIONAL MEASUREMENT

Professional, high- and low-frequency measurement with results reporting and recommendations.

A specialized technician will travel to your home to perform rigorous high- and low-frequency measurements. Once the data is collected, a report is prepared describing the current situation and recommendations for improvement.



# Spray Guns

## SPECIAL BLOWN-OUT GUN AND MORTARS

Ref.	Resins
153	Ref.A352



Specially designed for blowing insulation between ceilings and false ceilings (Neolev or Natural Cork blown) and for mortars. High blowing and spraying flow, built-in air regulator, and ergonomic design.



Includes:

- 5 litre hopper (for mortar application).
- Special inflated hose, 3 meter venturi effect.
- Ø 20mm passage nozzle.

## CORK SPRAY APPLICATION GUNS

Gravity	Pressure
Ref.154	Ref.155



Special gun for applying sprayed cork, with air valve, high product inlet and outlet flow, and stainless steel needle.

Designed with air regulation, quick-release coupling, trigger lock, and ergonomic design.

Equipped with:

- Ø 5.5 mm passage nozzle.

2 different models:

- Gravity gun, with 45° elbow, to facilitate application on floors and roofs
- Pressure gun, for application with Suberlev machine.

It is used for:

- Thermal paints.
- Thermo-Covers.
- Projected Cork.
- Foamlev (with Ø 8 nozzle).

## SPECIAL MORTAR PROJECTION LAUNCH

Ref.
156



Special lance for applying Suberlev or Sprayed Natural Cork thermal mortars to roofs, equipped with camlock quick-release couplings and air and flow control. For application with a spraying machine.

Equipped with:

- Passage nozzles Ø 8 - 10 - 12 - 14.



# MACHINERY

Ref.  
157

## INDUSTRIAL CORK APPLICATION MACHINE PROJECTED

Self-contained machine with built-in compressor, product booster pump, and 57-liter hopper. Connects to a 220V outlet.

Approximate performance of 700-800 m<sup>2</sup>/day, with two workers on roofs.

Maximum	7 bares, hasta 10 m.
Pressure Power	1'5 kW (2cv). 580 x
Dimensions	860 x 1000 mm.
Weight	79 kg.

Includes a gun, a 7.5-meter hose (for product and air), and special nozzles for applying paints and thermal waterproofing, as well as SUBERLEV sprayed cork.



Ref.  
158

## CORK AND MORTAR SPRAYING MACHINE SUBERLEV

Machine suitable for applying thermal paint, thermal waterproofing, sprayed natural cork, and mortars. With a 30 L hopper, expandable to 60 L, and up to 30 meters of hose for high-altitude spraying with Suberlev cork, and a 230 V outlet. Approximate output of 800-1200 m<sup>2</sup>/day for applying Suberlev sprayed cork on flat roofs.

Maximum	20 bars, up to 30 m.
Pressure Power	1'5 kW (2 hp).
Dimensions	1100 x 460 x 550 mm.
Weight	70 kg.

Equipped for sprayed cork and thermal mortar application: - C4-2 rotor/stator - Pressure-assisted cork spray gun - 10 m product hose - 23 m on/off switch cable



Ref.  
A345

**NEW**

## PEARL COMPACTION MACHINE

Compact equipment for resin blowing, consisting of a compressor and product tank.

Boiler Volume	10 L.
Compressor Volume	80 L.
Motor Power	2 x 750 W.
Weight	75 kg.



## SUBER-TUBE SOLAR TUBE

25 cm.	53 cm.
Ref. ST029	Ref. ST002



A system for capturing, guiding, and transmitting natural light. It features an exterior collector that maximizes light reception, and its highly reflective interior (99.70% of sunlight) illuminates every corner.

Optimal solution for industry, warehouses, and shopping centers where activities take place primarily during the day.

- Resistant to UV radiation, the sun's heat is not transmitted to the interior.
- They do not require cleaning or maintenance
- Perfect hermeticity and water resistance.
- Reduction of environmental impact and high energy savings.
- Possibility of registering light input with remote control.

To provide illumination in nighttime or cloudy environments, the tubes are combined with the latest LED technology, allowing for efficient lighting. Sun + LED = 24-hour light.

Diameter	25 cm. / 53 cm.
Height	62,5 cm.

## LED-IN SOLAR TUBE SYSTEM

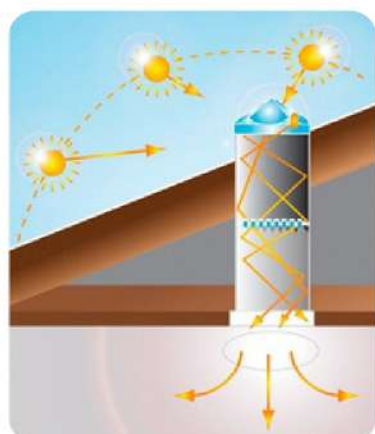
Ref.
ST003-ST012



Integration of solar tube lighting, allowing for efficient lighting 24 hours a day. During sunny periods of the day, solar tubes transport natural light into the spaces. To provide light during nighttime or cloudy periods, the LED-IN system emits continuous light to maintain the same level of illumination throughout the space.

Control options:

- Standard (On-Off): Starting and stopping performed manually by the user
- Manual dimming (manual console).
- Automatic dimming (light controller console).



Model.	Potentia (in).	Luminance (lumens).
Led in 250	15	854
	30	1.708
Led in 530	15	1.708
	120	10.242



# INDUSTRIAL VENTILATION

## LEV-FILTER ANTI-CONDENSATION BLOWN-IN FILTER

Ref.  
170

Indoor pure air blower that renews the air in the area where it's installed through forced ventilation. Recommended for industrial use, workshops, etc., with problems of humidity, condensation, mold, or unpleasant odors.

Dimensions	657 x 290 x 222 mm.
Maximum flow	300 m <sup>3</sup> /h (with two filters).
Rate Speed	2220 rpm.
Maximum admissible intensity	0.65 A (230 V).
Installed power	0.08 kW.



Ref.  
168

## UNDER-DECK SOLAR EXTRACTOR

A fan with a photovoltaic panel allows ventilation and reduces interior temperature, using solar energy and respecting the environment. Very easy to install and guaranteed to be watertight. It's a quiet fan compared to traditional ones. It can be connected to the mains electricity supply for days with little sun. It can also be operated with a thermostat and/or timer.

Dimensions	58 x 68 x 51 cm.
Diameter	25 cm.
Speed	2.400 rpm.
Motor power	12 V.
Installed power	50 W.
Electrical power of the photovoltaic	12 V.
Panel Flow	950 m <sup>3</sup> /h.
Weight	12,5 kg.



Ref.  
169

## ADJUSTABLE INDUSTRIAL EXTRACTOR

Industrial warehouse extractor with mains power and heat detector for automatic start-up based on the programmed temperature. With fiberglass-reinforced plastic propeller and contact protection grid according to UNE 100250 standard.

Dimensions	80 x 71 mm.
Diameter	63 cm.
Speed	890 r/min.
Maximum admissible intensity	3 A.
Installed power	370 W.
Maximum flow rate	12.350 m <sup>3</sup> /hora.
Sound pressure level	64 dB.
Approximate weight	21 Kg.



# RESIDENTIAL / OFFICE VENTILATION

## LEVFILTER ECO

**NEW**

Eco	Eco Duo
Ref.A355	Ref.A356



A ventilation unit that can operate either individually or in combination with two units. It is a 97% efficient heat recovery ventilation system, which saves on indoor air conditioning. It also helps clean stale air, with a choice of different filters.

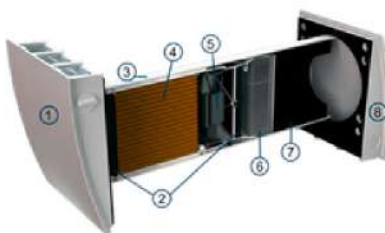
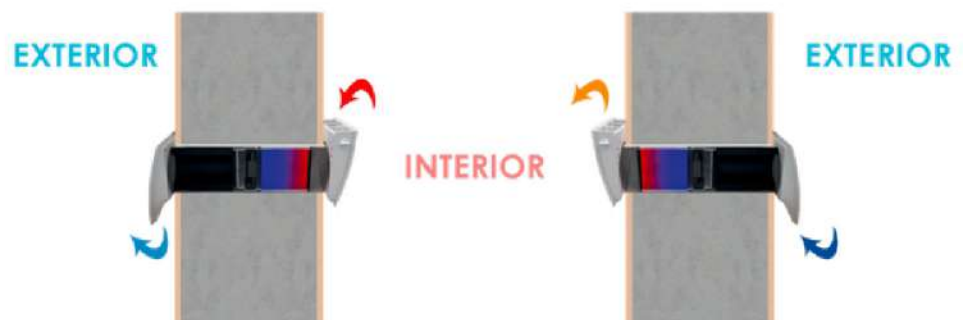
One unit has a maximum air capacity of up to 50 m<sup>3</sup>/h, with two units you can achieve up to 100 m<sup>3</sup>/h.

### Operation:

Hot stale air is extracted from the premises, flows through the ceramic regenerator and transfers its heat energy and moisture to it.

As the ceramic regenerator heats up, the unit switches to supply mode. Cleans the flow of cold incoming air through the regenerator and absorbs accumulated heat and moisture.

When the ceramic regenerator cools, the unit switches to air extraction mode.



1. Internal Grille 2. G3 Filters 3. Air Duct 4. Ceramic Energy Accumulator (regenerator)

5. Reversible fan with EC motor 6. F8 filter (optional) 7. Noise insulating layer 8. External grille

Speed	1	2	3
Voltage / 50-60 Hz [V]	100-230		
Power [W]	2,07	4,15	10,10
Ventilation mode with air capacity [m <sup>3</sup> /h]	15	30	50
Filter	G3 (F8)*		
Transported air temperature [°C]	30...+50		
Noise level at 1 m [dB(A)] according to ISO 3741: 2004 / DIN EN 20140	22	29	32
Noise level at 3 m [dB(A)] according to ISO 3741: 2004	13	20	23
Attenuation of external sound pressure [dB(A)] according to DIN EN 20140	41		
Regeneration efficiency [%] according to DIBt LÜ-A 20	92	86	78



# RESIDENTIAL VENTILATION

Ref.

A357

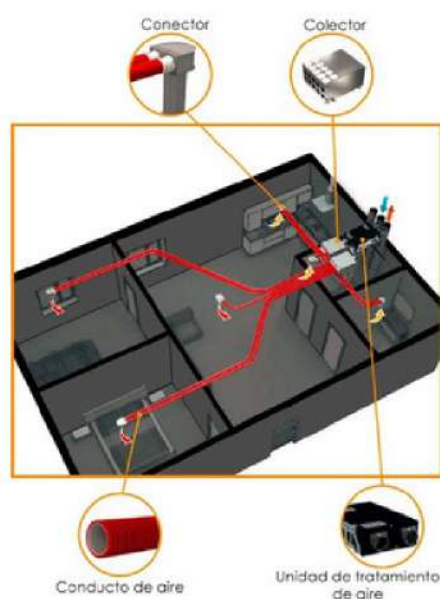


## LEVFILTER ECO 220

Air handling unit with heat recovery that allows ventilation while minimizing heat loss. This ventilation system has a heat recovery efficiency of up to 98%. It features filters that keep the air inside clean. This unit has a maximum air capacity of up to 220 m³/h, making it perfect for an entire home.



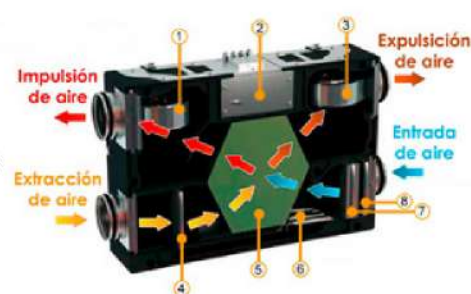
### Operation:



Thanks to the incorporation of the counterflow polystyrene heat exchanger, it allows energy savings in climate control in the following ways:

**In winter**, the heat from the air extracted from the interior is collected and transferred to the exhaust air stream, reducing heat losses caused by ventilation.

**In summer**, the external heat from the supply air is transferred to the exhaust air stream, significantly reducing the air conditioning load.



1. Supply fan, 2. Control unit
3. Extraction fan 4. Extraction filter G4 5. Heat exchanger 6. Bypass 7. Supply air filter F7 8. Supply air filter G4

Unit Voltage	1 – 230 V.
Maximum Power	87 W.
Maximum Current	0.71 A.
Maximum Airflow	220 m³/h.
RPM	2200 min⁻¹.
Sound Pressure Level at 3 m	33 dBA.
Transported Air Temperature	-25°C to +60°C.
Casing Material	Expanded Polypropylene (EPP).
Insulation	EPP 30-15 mm.
Extraction Filter	G4.
Connected Air Duct Diameter	Ø 150 mm.
Weight	14 kg.
Recovery Efficiency	86% to 98%.
Heat Exchanger Type	Polystyrene.

\* Recommended for passive houses and nearly zero-consumption homes.

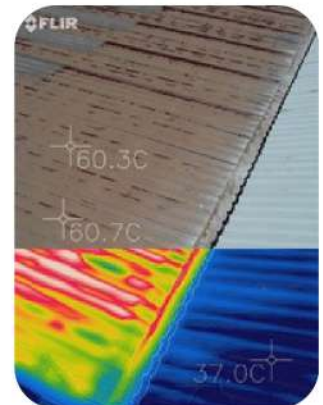
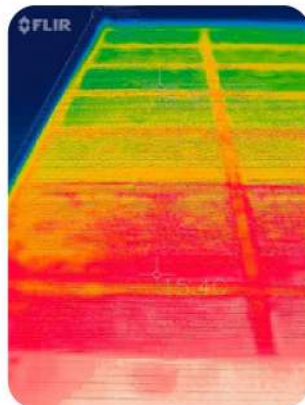
# THERMOGRAPHY

Thanks to the infrared energy emitted by materials, thermal cameras allow us to see the amount of radiated energy. When applied to the construction sector, this greatly facilitates the analysis of the overall condition of a building.

This method of studying and controlling the quality of construction offers numerous advantages, such as:

- Real-time measurement : Measurements can be taken at any time, and if the material's temperature changes for any reason, the data will immediately reflect those changes.
- Two-dimensional plane : This allows multiple points to be measured simultaneously.
- Comprehensive information : Thermal imaging not only provides the temperature of a wall or part of the building but also allows for an overall view, enabling the detection of anomalies, humidity, leaks, etc.

However, to fully leverage this tool, it is essential to know how to interpret the data.



## FLIR ONE PRO

Ref.

ONE-A296



Connected to a smartphone, it offers a new view of the everyday world. It can be used to identify problems in the home, optimizing energy efficiency. With advanced image processing, and high resolution (1440 x 1080 pixels). iOS connection, depending on mobile device compatibility.

## THERMOGRAPHIC MEASUREMENT AND REPORTING

Ref.

176



Thermographic Measurement and Report, performed by a professional and with insulation recommendations.



# SERVICES

## MACHINERY RENTAL

We have a variety of machinery for applying all our products: GRACO RTX 1500 machines, PFT SWING machines, Gentillini compressors, application guns, bead compaction blow-off application units, etc. For more information, please contact our sales department.



## APPROVAL COURSES

We offer training courses to obtain certification and approval in the application of all our products and systems. Both theoretical and practical courses are offered.



## PRESCRIPTIONS AND TECHNICAL REPORTS

We prepare technical documentation and reports for each project requested. We provide specifications recommending the steps to follow for each project to achieve the best results, as well as a letter of guarantee.



## TECHNICAL ADVICE

We have a technical department available to advise all our clients on the best thermal insulation, waterproofing, or renovation solution for each building.



# DISPLAY FURNITURE



PENTAGON

Wooden furniture 2.10 m high, which is part in two modules. On each of its sides it has 4 real samples of our insulation and waterproofing systems, decoration, etc.

PYRAMIDAL

Wooden furniture in which they are located 9 great samples format and laptops, of our products. The samples have a size of 70 x 60 cm, and the height of the furniture is 1.90 m.



TABLE MODULE

1.05 m high cabinet, incorporating 10 real samples. It has a dual use: it serves as an exhibition piece and as a table for receiving and serve customers.



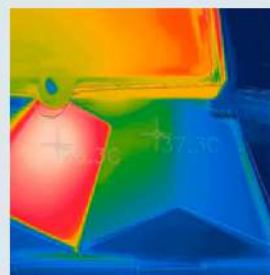
COMB

Comb-shaped sample rack with medium-sized samples (40 x 22 cm). It is a handy piece of furniture that can be placed on any shelf, table, shop window or similar.



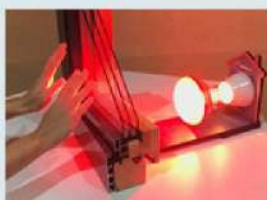
ROOFING FURNITURE

Demonstration furniture that allows you to check in situ the effectiveness of our products such as Projected Cork, Thermo-Roofs, Thermo-Facades, etc.



THERMAL SHEET FURNITURE

Demonstration unit showing how our thermal films work. Allows you to incorporate a glass sample with or without a thermal film.



MORE MATERIAL

We have catalogs, brochures, color charts for Projected Cork, color charts for Suber-Paint, thermal film leaflets, etc.





# SUBERLEV COLOR CHART

- Suber-Paint. - Spray-on Cork for Roofs. - Spray-on Cork for Facades. - Spray-on Cork for Interiors. - Novosuber Spray-on Cork. - Novosuber Dry Spray-on Cork. - Thermal Putty. - Microlev. and other Suberlev products.



CP-28

Additionally we have a chart of 400 stable colors in the exterior for any Suberlev product.

400-color Digital Chart.



\*Colors may vary depending on the product, its texture, and the order batch.

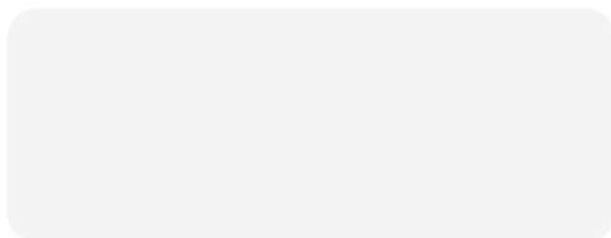


# **FALCON STEMA**

NATURAL TECHNOLOGY



Authorized distributor



## **FALCONSTEMA SARL**

Address Rue des Violettes 2 bis MC-98000 Monaco

Phone +377 99 90 56 35

info@falconstema.mc [www.falconstema.mc](http://www.falconstema.mc)