



# Suberlev Thermal Putty All-in-One Solution for Comfort Efficiency and Protection

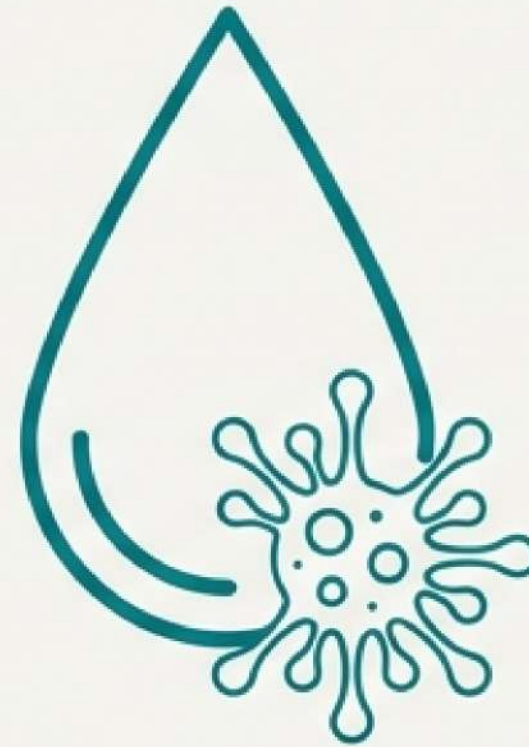


# Is Your Home Costing You Comfort and Cash?



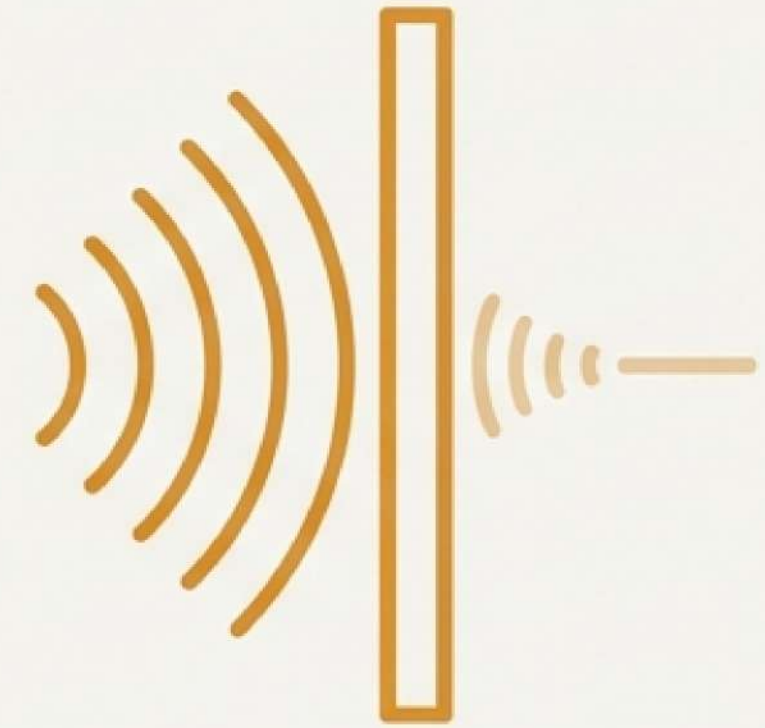
## Cold & High Bills

Are you tired of skyrocketing energy bills? Do certain rooms always feel chilly, no matter how high you turn up the heat?



## Damp & Mold

Have you noticed persistent damp spots, ugly mold patches, or condensation on your walls, especially in corners or behind furniture?



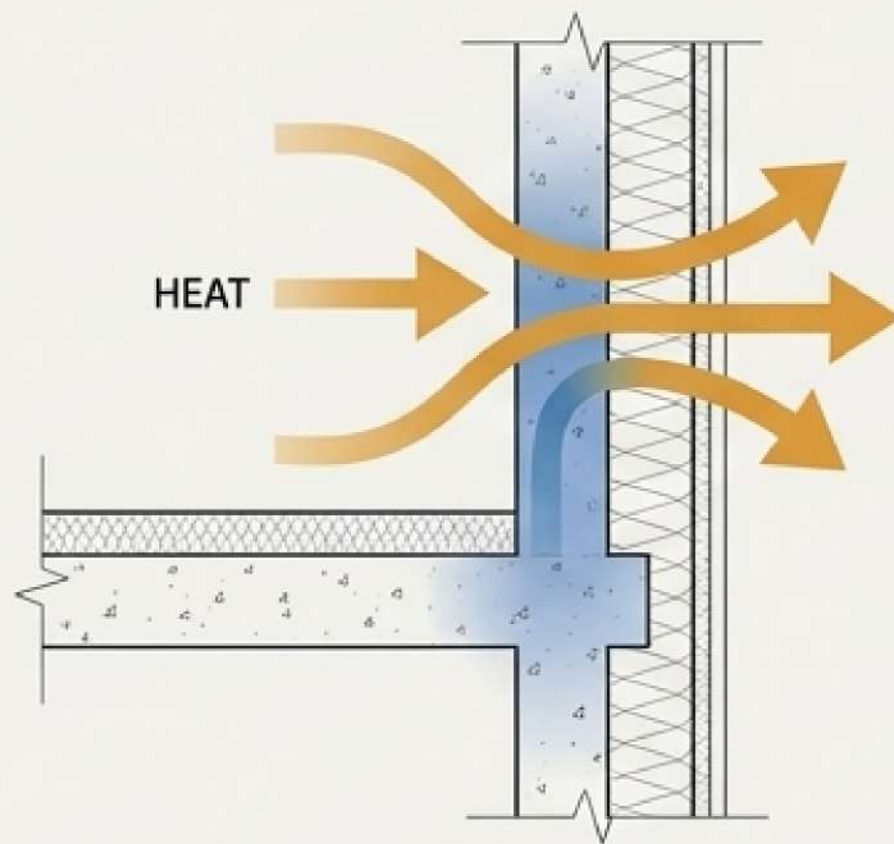
## Unwanted Noise

Is your peace disrupted by traffic from the street, footsteps from the floor above, or annoying echoes in large rooms?



# These Aren't Just Annoyances. They're Symptoms of Deeper Issues.

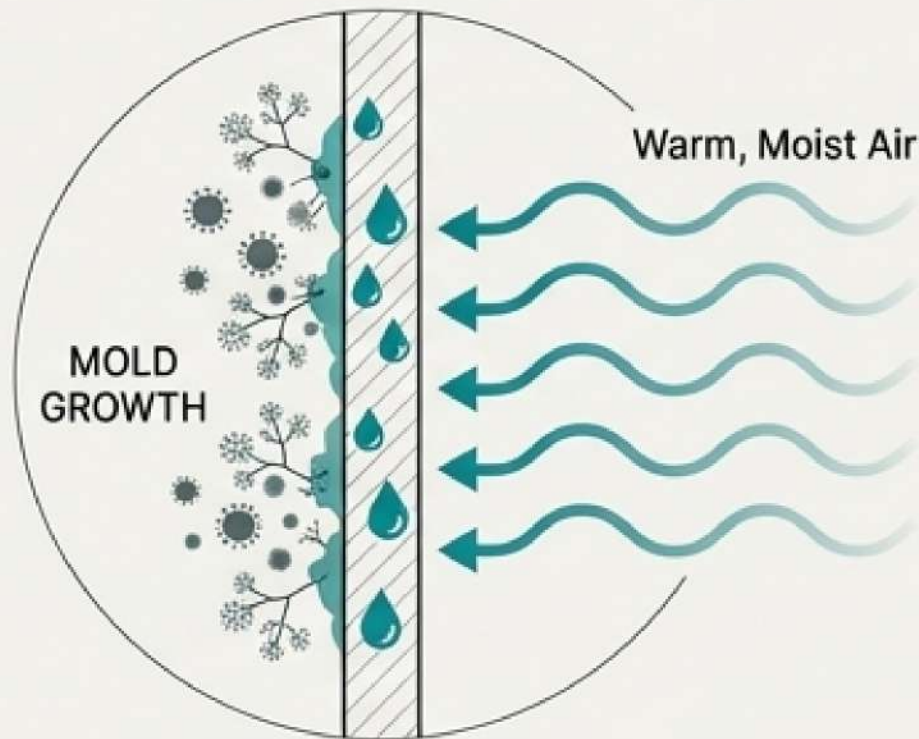
## 1. The Cause of Cold: Thermal Bridges



That cold spot on your wall is a "thermal bridge"—a superhighway for heat to escape your home. Poor insulation forces your heating and cooling systems to work overtime, wasting energy and money.

Source Sans Pro Regular

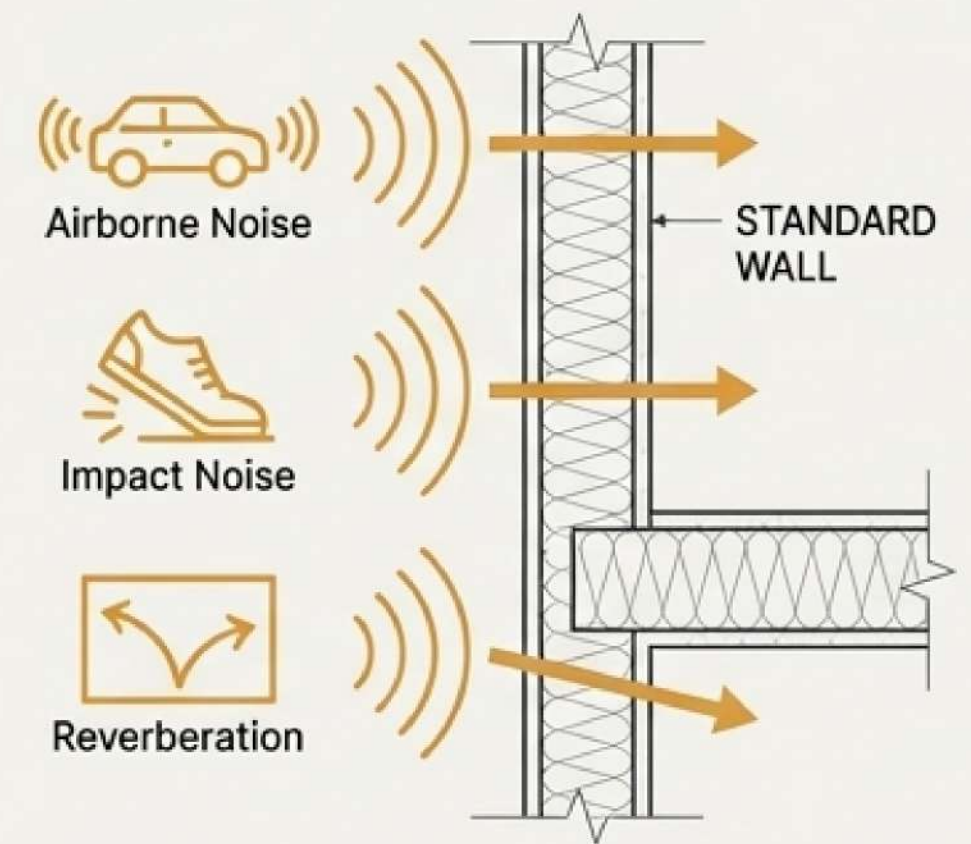
## 2. The Cause of Mold: Condensation Cycles



When warm, moist air hits a cold surface, it condenses. This creates the perfect breeding ground for mold and fungi, which can be a persistent health and maintenance issue.

Source Sans Pro Regular

## 3. The Cause of Noise: Poor Sound Dampening



Unwanted noise penetrates standard walls and floors. It includes airborne noise, impact noise, and reverberation, disrupting the tranquility of your living space.

Source Sans Pro Regular



# One Innovative Putty to Solve Three Core Challenges.



Introducing Suberlev Thermal Putty from Falconstema. This is not just another filler. It's a multi-purpose thermal mastic that acts as a thermal corrector, moisture barrier, and acoustic insulator in one ready-to-use formula.

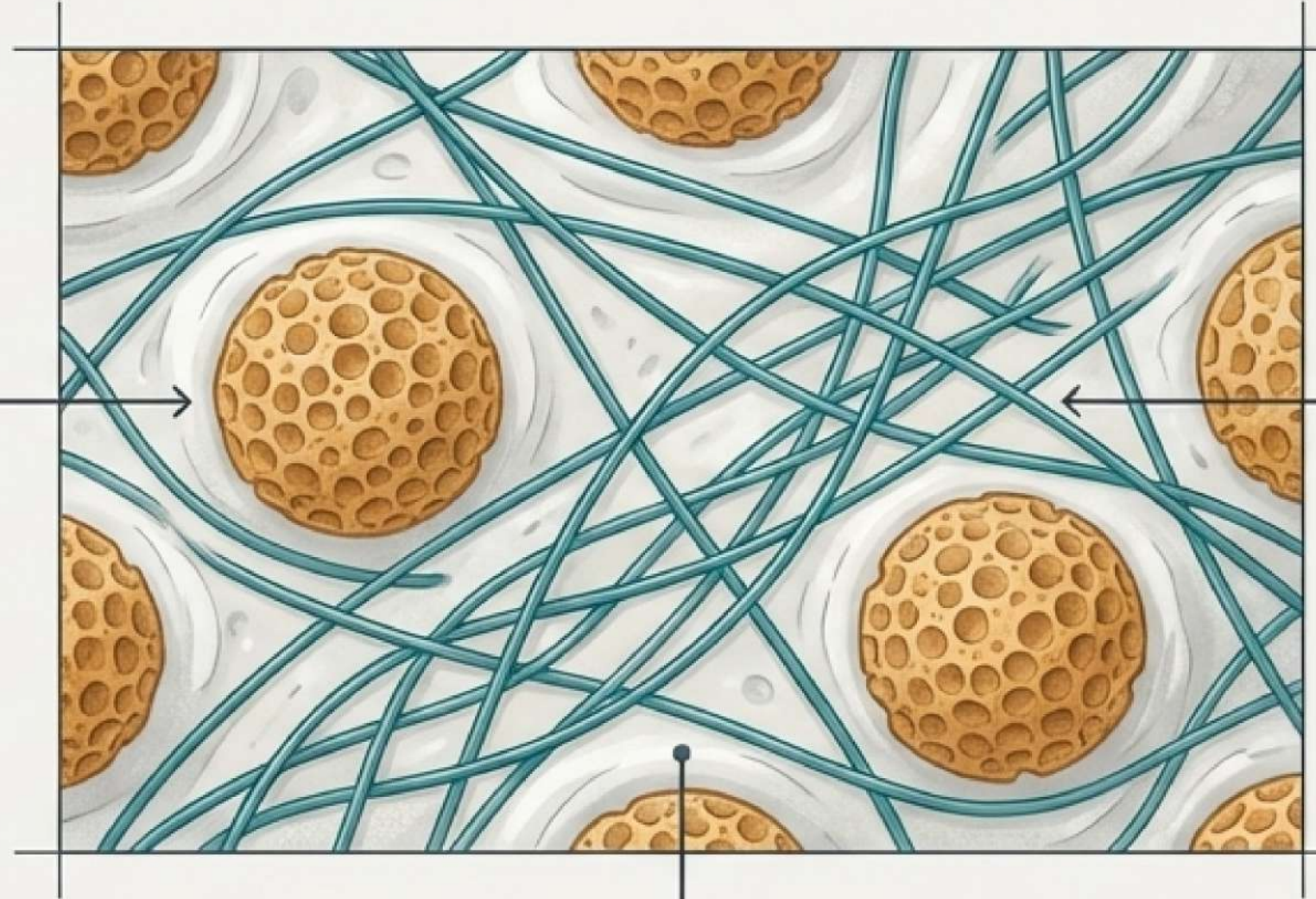


# The Science Inside: A Powerful Blend of Natural and High-Tech Ingredients.



## Natural Cork Granules

Source Sans Pro Regular  
The core of the product's performance. Provides exceptional thermal and acoustic insulation, keeping your home warm in winter, cool in summer, and quiet all year.



## Glass Fibers

Source Sans Pro Regular  
Microscopic fibers provide incredible strength and flexibility. This prevents cracks from forming as the putty dries or as the building naturally settles and moves.



## Acrylic Copolymers

Source Sans Pro Regular  
The high-tech binder that holds everything together. It ensures the putty adheres strongly to a huge variety of surfaces for a durable, long-lasting bond.

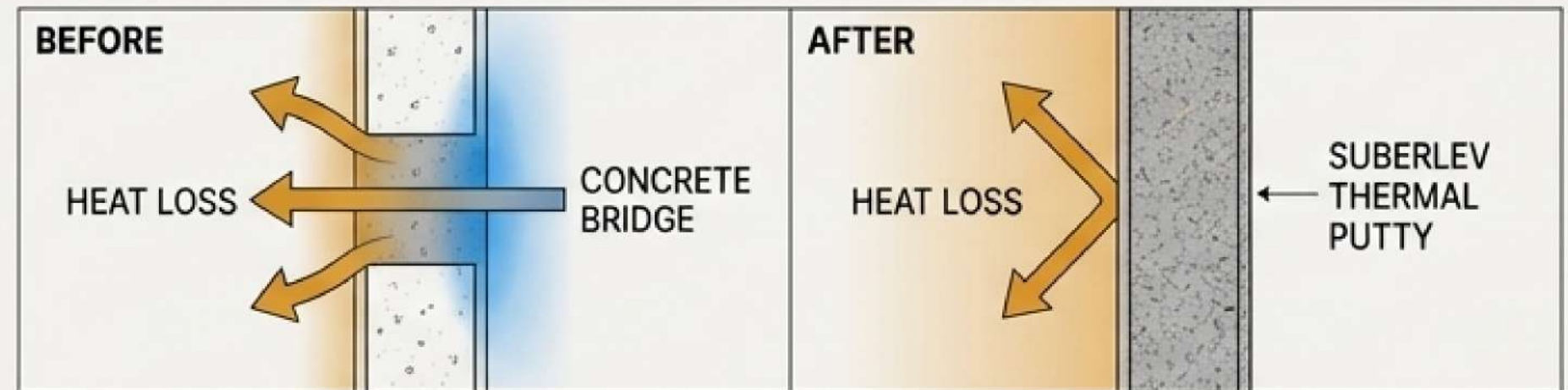


# Engineered to Correct Your Home's Most Common Failures.

## Thermal Correction

### **Stops Heat Loss & Eliminates Cold Spots.**

The natural cork creates an insulating barrier over walls and thermal bridges. This stops heat loss, maintains a stable room temperature, and leads to lower energy bills.



## Moisture & Mold Control

### **A Breathable Barrier Against Damp.**

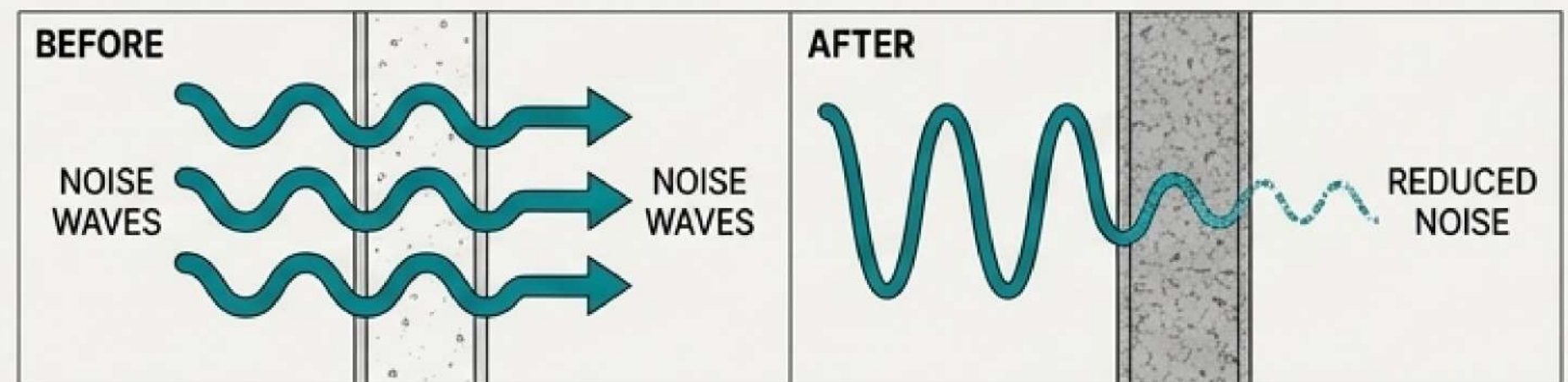
Suberlev is both permeable to water vapor (letting trapped moisture escape) and resistant to liquid water (blocking damp from getting in). This dual action eliminates the conditions mold needs to grow.



## Acoustic Improvement

### **Absorbs and Dampens Unwanted Noise.**

The cork content absorbs and dampens sound waves, significantly reducing airborne noise, impact noise, and reverberation for a quieter, more peaceful home.

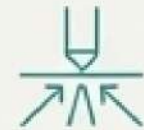




# More Than Just a Problem-Solver: A Versatile Ally for Your Projects.



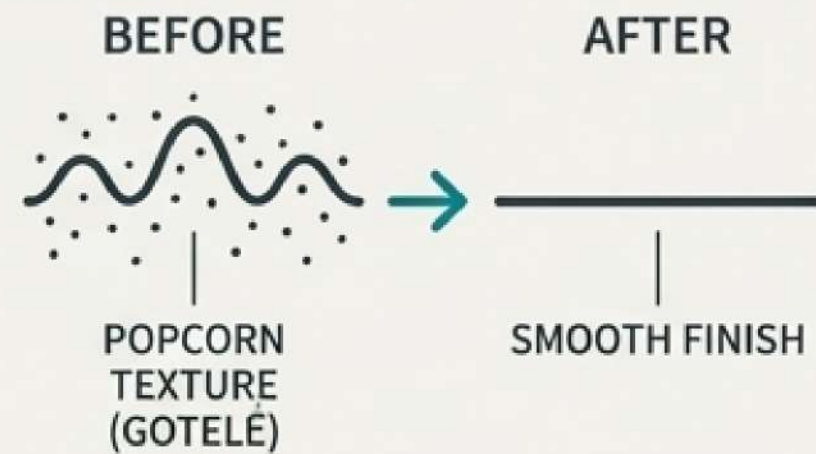
Suberlev isn't just for fixing problems—it's a multi-purpose product perfect for upgrading and finishing your most demanding projects. Its unique combination of adhesion, flexibility, and insulation makes it an invaluable addition to any pro or prosumer toolkit.





# The 'Swiss Army Knife' for Your Walls and Surfaces

## Smoothing Uneven Walls



### Challenge:

Old popcorn texture (gotelé), irregular plaster, or old ceramic surfaces.

### Suberlev Solution:

Levels out imperfections to create a perfectly smooth, modern finish ready for paint.

## Protecting Exteriors



### Challenge:

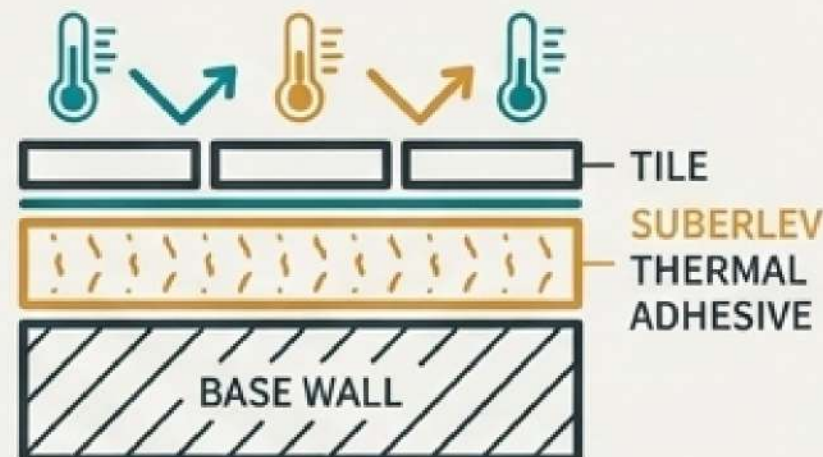
Facade degradation, cracks, and dampness from temperature changes.

### Suberlev Solution:

Serves as an ideal flexible base layer to prevent new micro-cracks and protect against moisture.

*\*Note: Not a final exterior finish; must be covered by a suitable topcoat.\**

## Tiling & Grouting



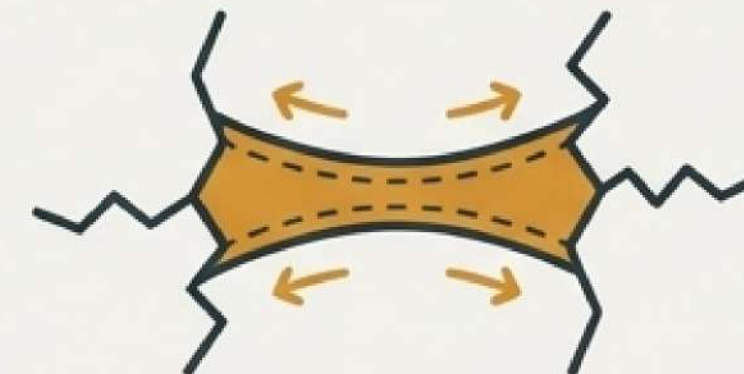
### Challenge:

Standard tiling doesn't address cold spots.

### Suberlev Solution:

Functions as a high-performance thermal adhesive, bonding strongly while adding a crucial layer of insulation.

## Fixing Cracks



### Challenge:

Cracks that reappear due to structural movement.

### Suberlev Solution:

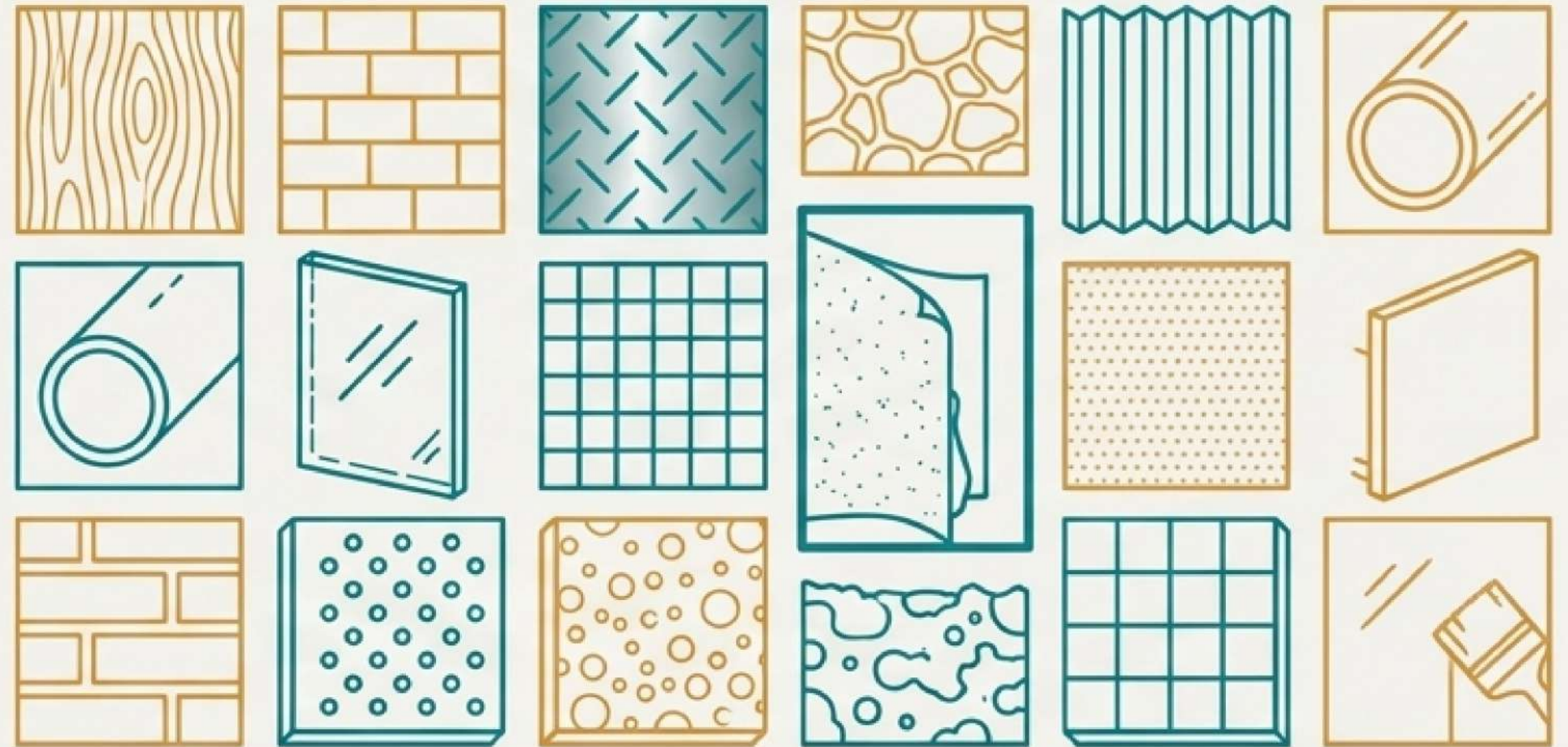
Its high elasticity allows it to fill cracks and move with the structure, preventing them from returning.



# Bonds to Nearly Any Surface. Flexes to Prevent Future Cracks.

## Unmatched Adhesion and Elasticity.

Buildings are not static. Suberlev's flexibility allows it to move with the structure, preventing new cracks. Its advanced acrylic copolymers ensure it adheres strongly to a massive range of construction materials.




Concrete, cement, wood,  
galvanized steel, ceramic  
brick, natural stone,  
corrugated metal sheeting,

sheeling, PVC, glass,  
mosaic tile, gypsum,  
drywall, mortar, EPS and  
XPS insulation boards,

pfs insulation boards,  
porcelain tile, and even  
well-adhered existing  
paint.



# The Proof: Performance Data You Can Count On.

Metric	Value	Explanation
Thermal Conductivity (EN 12667) Source Sans Pro Regular	<b>0.059 W/m.K</b>	<i>What this means:</i> Highly effective at stopping heat transfer, translating to real energy savings.
Water Vapour Permeability (EN 1504-2) Source Sans Pro Regular	<b>Class I: Permeable</b>	<i>What this means:</i> The wall can breathe, allowing trapped moisture to escape and preventing condensation issues.
Liquid Water Permeability (UNE-EN 1062-3) Source Sans Pro Regular	<b>0.006 kg/(m<sup>2</sup>·h<sup>0.5</sup>)</b>	<i>What this means:</i> Extremely resistant to liquid water penetration, protecting against damp.
Adhesion by Direct Traction (UNE-EN 1542) Source Sans Pro Regular	<b>1.0 MPa</b>	<i>What this means:</i> Creates an incredibly strong, durable bond to substrates.
Compliance Source Sans Pro Regular	<b>CE Certified (UNE-EN 1504-2)</b>	

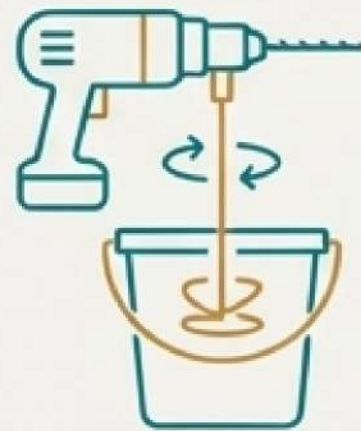


# Your Quick-Start Guide to a Flawless Application



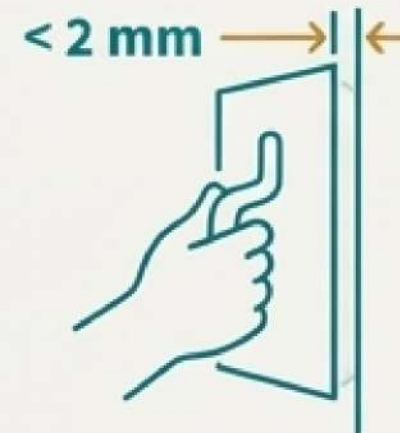
1

Ensure the surface is clean, dry, and free of dust or loose paint. For dusty surfaces or cracks, use Suber-Fix primer first.



2

Use a low-speed mixer for 3-5 minutes until you have a smooth, homogeneous paste. Add up to 200 mL of water per 15L container if needed.



3

Use a trowel or spatula. Crucially, do not exceed 2 mm of thickness per layer to avoid cracking.



4

Let each layer dry for 4-6 hours at 20°C before applying the next one.



5

Once fully dry, the surface can be sanded, painted (water-based), varnished, or tiled over.



# Professional Details for a Perfect Finish.

## Working Environment

- **Temperature:** Apply between 5°C and 45°C.
- **Conditions to Avoid:** Do not apply in direct sunlight, strong wind, rain, or if there is any risk of frost.



## Consumption Rate

- Theoretical: 1.20 kg/m<sup>2</sup> per mm of thickness.
- Approximate Total: ~2 kg/m<sup>2</sup> (applied in two or more coats).

## Finishing Details

- **Sanding:** Use grit 60 - 120.
- **Painting:** Compatible with water-based paints.
- **Exterior Use:** Must be used as a base or intermediate layer, not as the final finish.

## Storage & Safety

- **Storage:** Up to 2 years in original sealed container, stored between 5-45°C.
- **Safety:** Keep out of reach of children. Clean tools with water immediately after use.







# A More Comfortable, Efficient, and Protected Home.

**Suberlev Thermal Putty** is more than a product; it's a multi-benefit system for creating superior living and working spaces. By correcting fundamental issues with thermal insulation, moisture, and acoustics, it empowers you to take on projects that truly improve your home's performance and your quality of life.

**Callout:** For best results on large or complex projects, the manufacturer recommends using an approved applicator.



# Help Us Help You

## Innovation in Protection.



The information provided is based on extensive practical experience and laboratory testing.  
We recommend practical tests to ensure compatibility for each specific application.



Falconstema



2bis, Rue de Violettes,  
98000 Monaco



[info@falconstema.mc](mailto:info@falconstema.mc)



+377 99 90 56 35