

The Professional's Advantage in High-Stakes Coatings

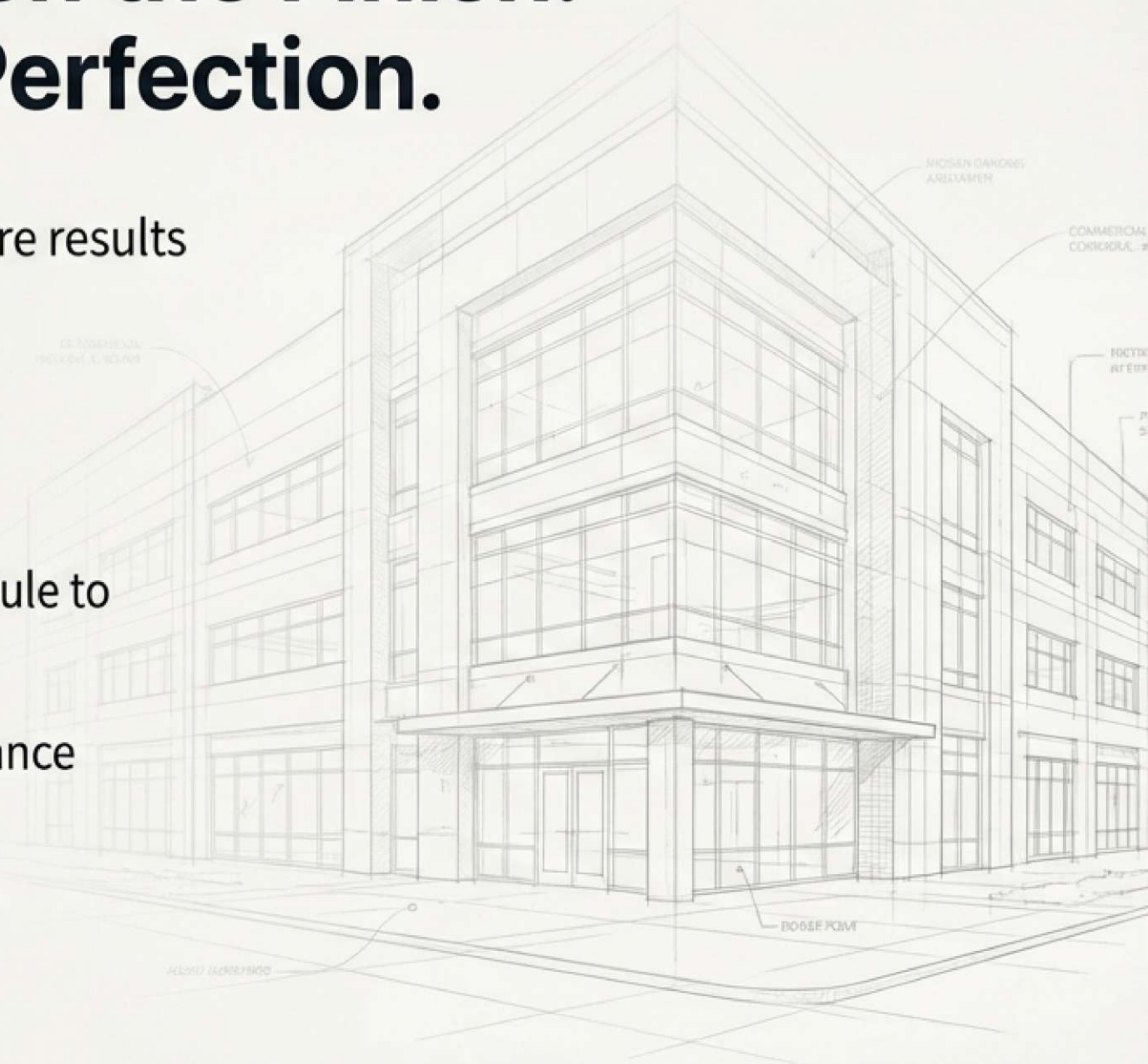
The Hopper Projected Cork Gun. Engineered for Speed, Quality, and Versatility.



Your Reputation is Built on the Finish. Every Project Demands Perfection.

As a professional, you operate in an environment where results are everything. You face constant pressure to deliver:

- **Flawless, Uniform Finishes:** Meeting exacting client standards on every job.
- **Aggressive Timelines:** Completing projects on schedule to maximize profitability.
- **Material Complexity:** Managing thick, high-performance coatings that standard tools can't handle.
- **Operational Uptime:** Relying on tools that withstand demanding job site conditions without failure.



The Engineered Solution for Demanding Applications

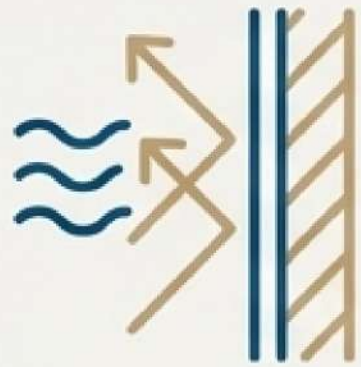
The Hopper Projected Cork Gun is the definitive tool for professionals seeking to optimize speed, quality, and versatility. It is engineered from the ground up to master the application of sprayed cork, thermal paints, and other high-viscosity protective coatings.

Precision, durability, and efficiency for the modern job site.



One Tool, A Spectrum of High-Value Applications

Enhance your service versatility. The Hopper Gun is designed to professionally apply a range of advanced materials, making it a valuable asset for any contractor.



Sprayed Cork

For superior thermal/acoustic insulation and durable waterproofing.



Thermal Paints & Thermo-Covers

For creating high-performance thermal insulation barriers.



Foamlev

For effective, resistant waterproofing layers.
(Note: Requires Ø 8 nozzle).

Performance That Drives Profitability

Accelerate project timelines and optimize labor costs.

High Product Input and Output Flow Rate

The gun is engineered for high-volume material throughput. This core design feature significantly reduces man-hours per application by allowing you to execute large-scale jobs faster.

Optimize labor and resource allocation to improve overall project profitability.

Standard Application Method



Hopper Gun Application



Time & Labor Savings



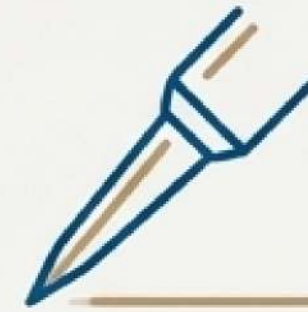
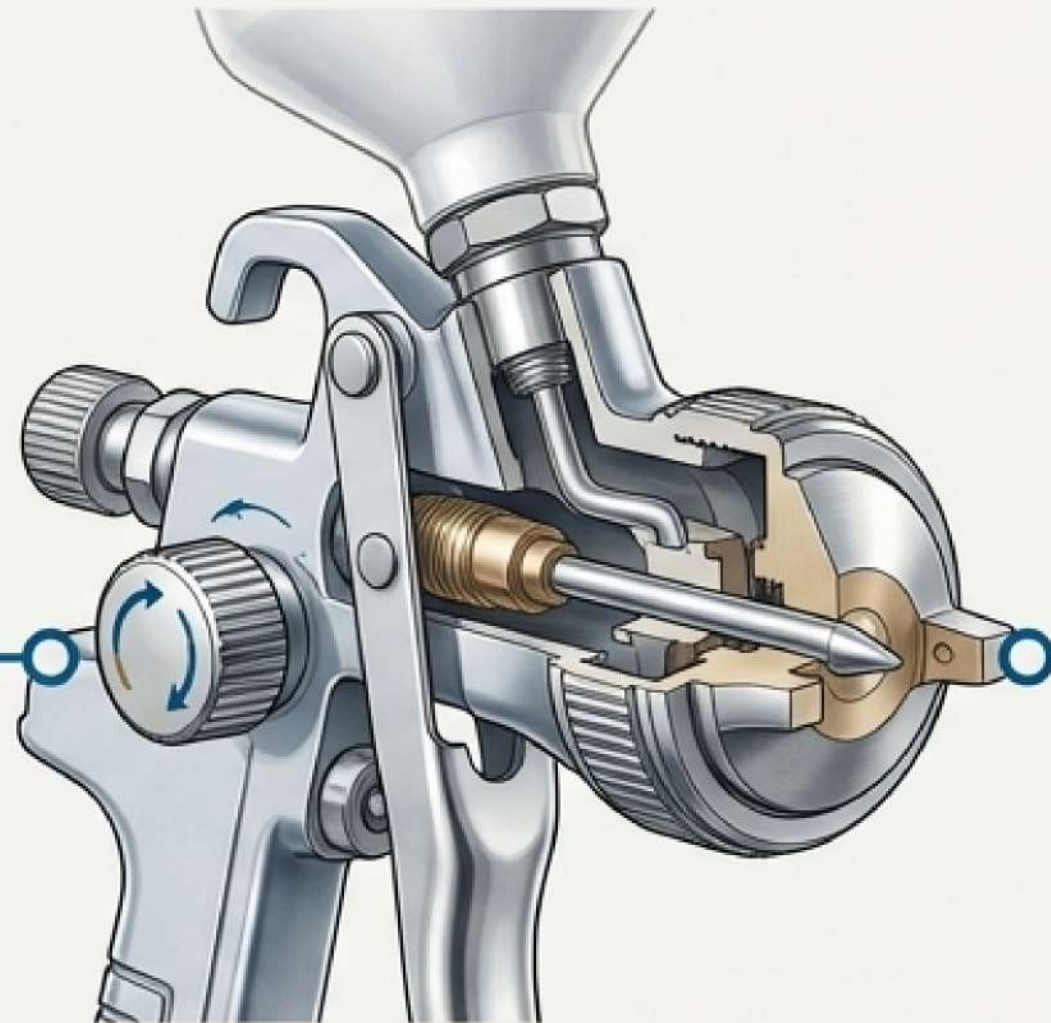
Precision That Guarantees a Flawless Finish

Deliver the uniform, high-quality results that clients demand.



Built-in Air Regulator

Allows for fine-tuning airflow to match the specific requirements of each material, preventing splatters and ensuring a consistent texture.



High-Grade Stainless Steel Needle

Ensures a precisely atomized and consistent spray pattern for a uniform coating, resisting wear from abrasive materials.

The Bottom Line: This combination of features provides the precise control essential for a professional-grade finish, every time.

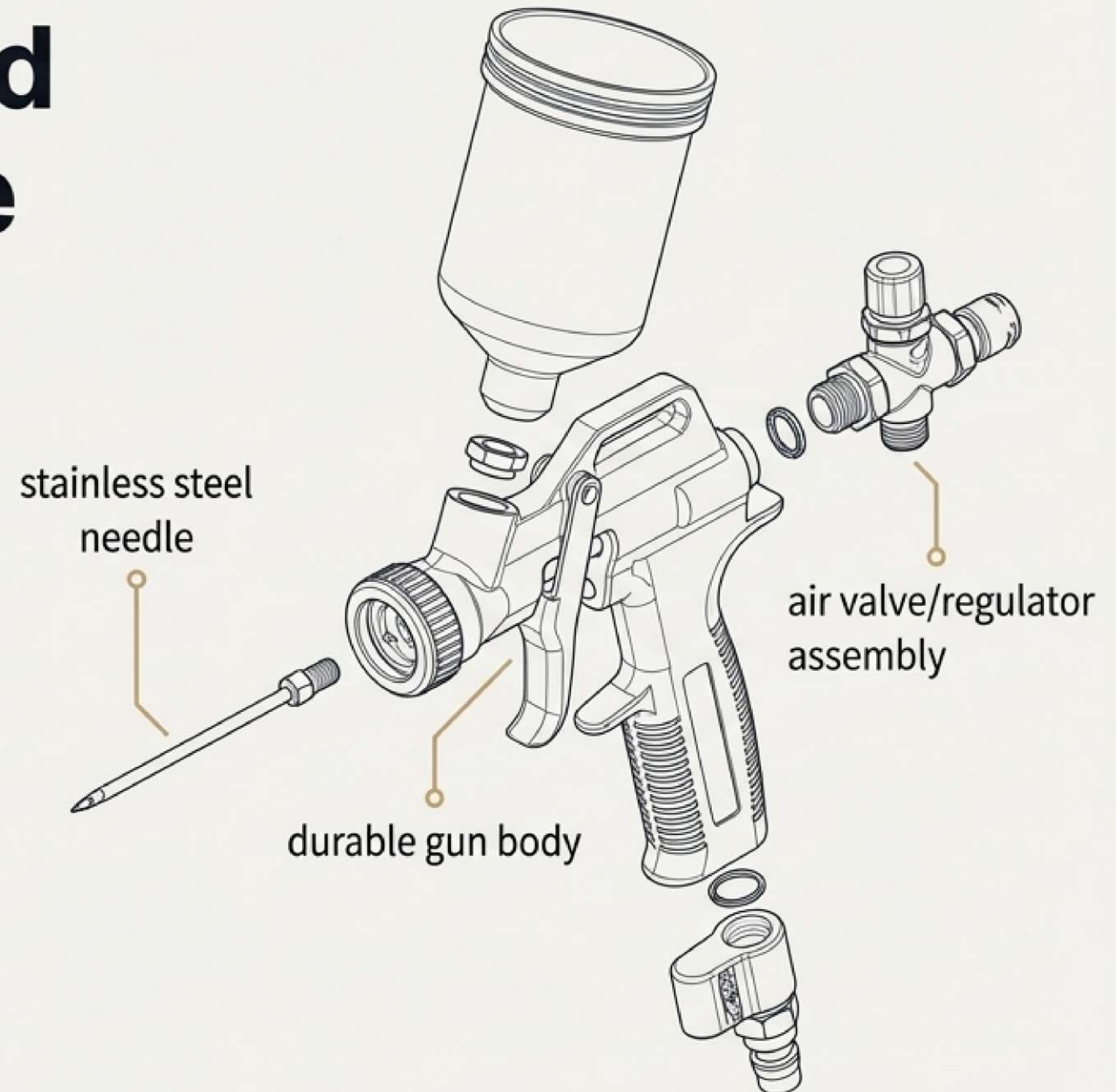
Durability Engineered for Maximum Uptime

A tool built to withstand the rigors of the professional job site.

High-Quality, Durable Materials

The gun is constructed to perform reliably in demanding construction and industrial environments. The critical **stainless steel needle** is a key design choice that resists corrosion and wear, ensuring precise and long-lasting performance.

The Bottom Line: This is an investment in reliability that protects your productivity and ensures consistent results over the lifetime of the tool.



Ergonomics for Sustained Productivity

Minimize operator fatigue and maintain high-quality work from start to finish.



Ergonomic Design

Shaped for comfort to reduce strain on the wrist and arm during prolonged use.



Integrated Trigger Lock

Holds the trigger during continuous application, preventing hand fatigue and allowing the operator to focus on consistency.

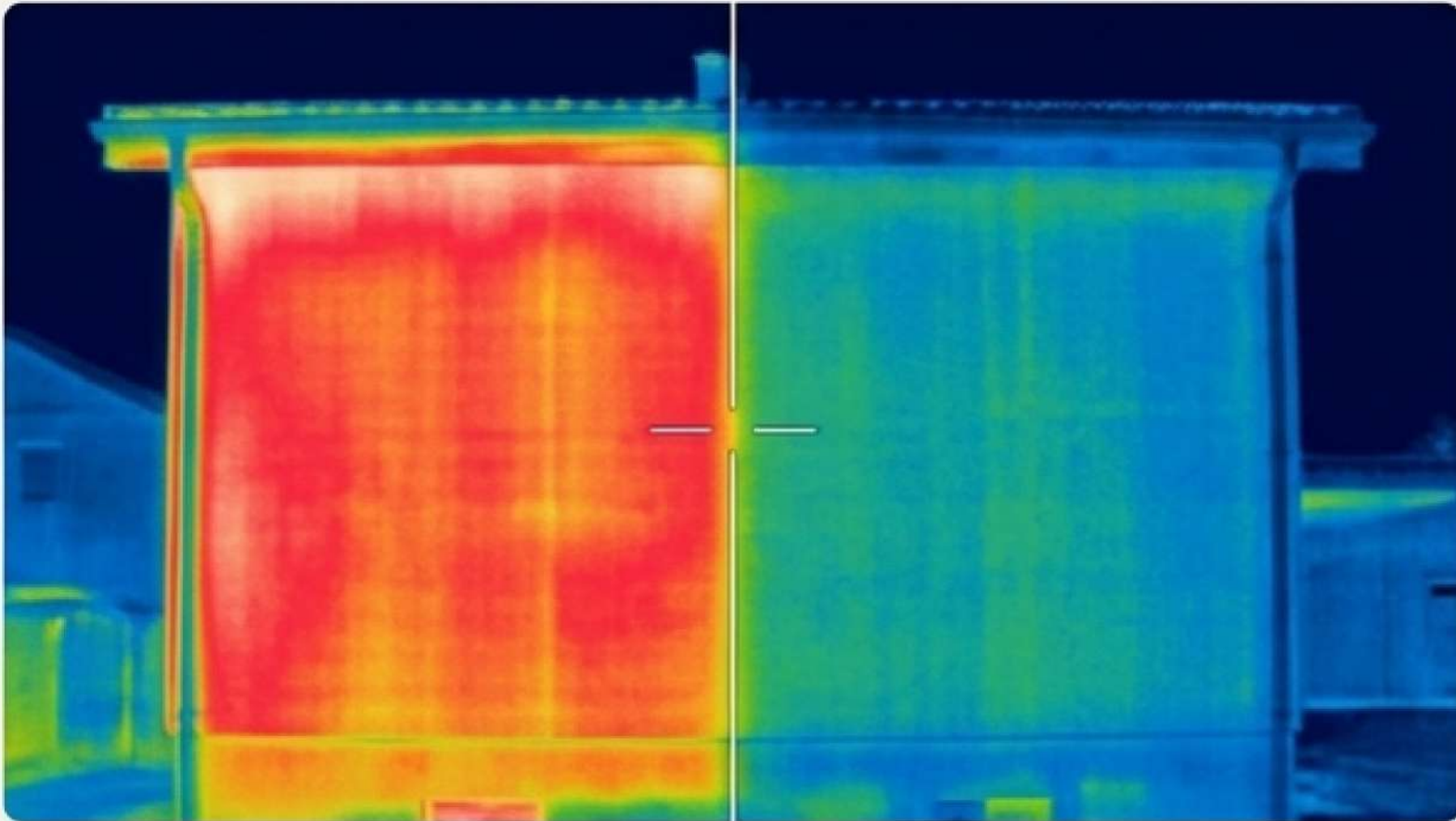


The Bottom Line: Enhanced operator comfort supports sustained productivity and helps maintain a high standard of work quality throughout the entire project.

Translate Your Work into High-Value Client Outcomes

Using the Hopper Gun allows you to deliver tangible, long-term value to your clients, strengthening your proposals and justifying premium services.

Deliver Superior Thermal & Acoustic Insulation



Application: Precise application of sprayed cork and thermal paints.

Client Benefit: Improved interior comfort, quieter spaces, and reduced long-term energy consumption.

Provide Effective & Durable Waterproofing



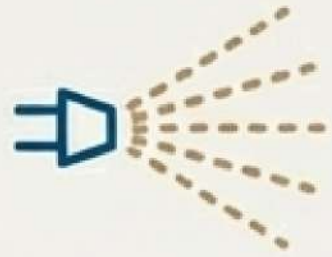
Application: Seamless application of sprayed cork and Foamlev.

Client Benefit: Protects structures from moisture and leaks, ensuring the integrity and longevity of the building envelope.

Technical Specifications at a Glance

Specification	Description
Product Name	Hopper Projected Cork Gun (SUBERLEV)
Primary Function	Professional spray application of sprayed cork, thermal paints, and Foamlev
Key Components	Stainless steel needle, High-quality durable materials, Air valve
Control System	Built-in air regulator for precise airflow adjustment
Connectivity	Quick plug / Quick-connect fitting for easy connection to air source
Ergonomic Features	Ergonomic design with integrated trigger lock
Performance	High product input and output flow rate for fast and efficient application

The Professional's Advantage: A Strategic Summary



Achieve Professional Finishes

Guarantee the high-quality results clients demand with precision control over material application.



Accelerate Project Profitability

Optimize time and resources with a high flow rate that enables faster work on large-scale jobs.



Enhance Service Versatility

Utilize a single, reliable tool for multiple applications including insulation, waterproofing, and specialized coatings.



Reduce Operator Fatigue

Support sustained performance and maintain work quality during long periods with a superior ergonomic design.

Help Us Help You

Innovation in Protection.



The information provided is based on extensive practical experience and laboratory testing.
We recommend practical tests to ensure compatibility for each specific application.



Falconstema



2bis, Rue de Violettes,
98000 Monaco



info@falconstema.mc



+377 99 90 56 35